

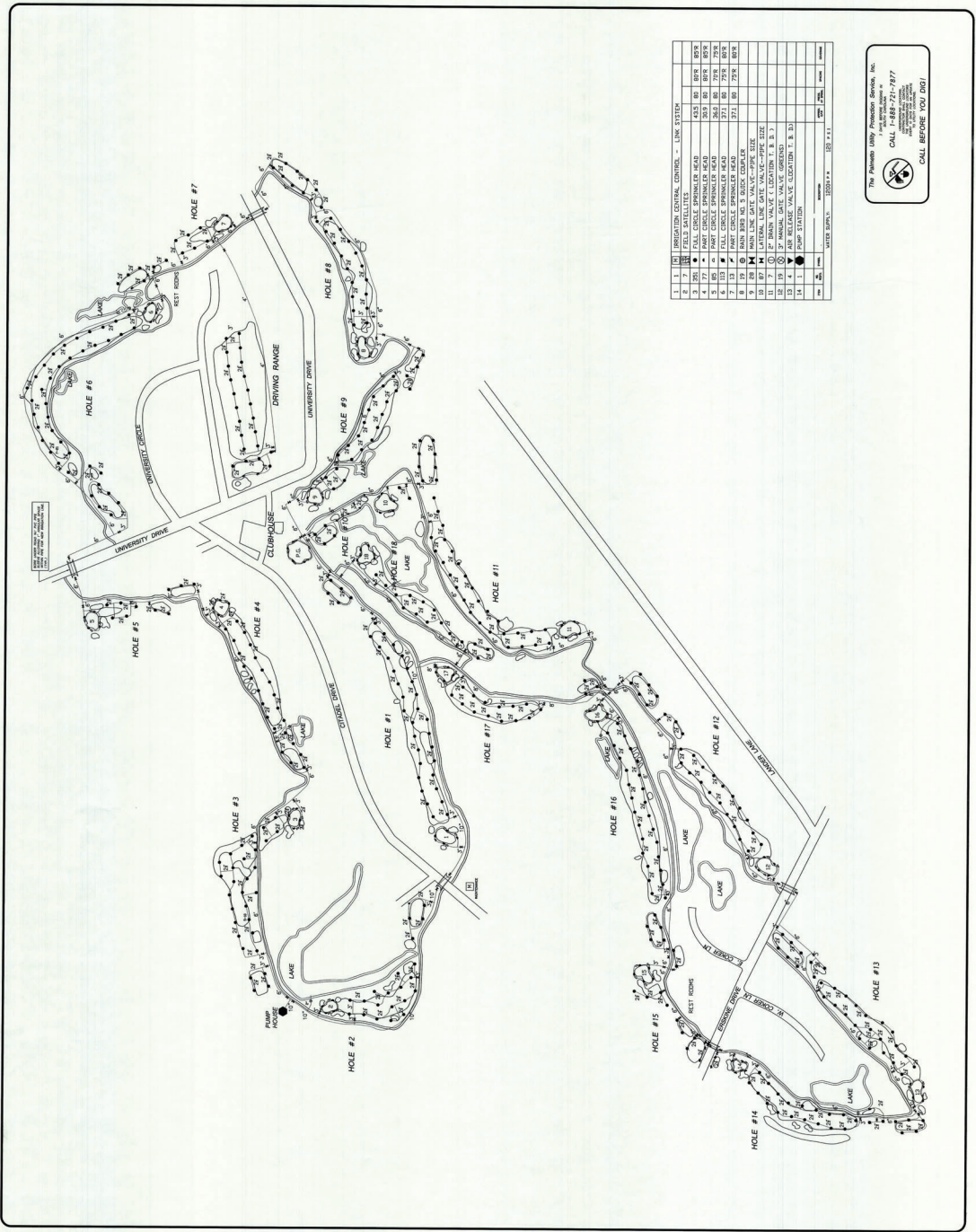
PROJECT NO. H17-951-M-B
 CAMPUS DEVELOPMENT / INFRASTRUCTURE
 IMPROVEMENTS - QUAIL CREEK IRRIGATION
 IRRIGATION PIPE LAYOUT



COASTAL CAROLINA UNIVERSITY
 FACILITIES PLANNING & MANAGEMENT
 PO BOX 261954 - 755 HWY 544
 CONWAY, SC 29528 (29328)

DATE: Jan. 30, 2007
 SCALE: 1"=200'
 DRAWING NO.: H17-951-M-B
 DESIGNED BY: JTB/ML
 SHEET: 3 of 5

Revisions



NO.	SYMBOL	DESCRIPTION	QUANTITY	SCALE	DATE
1	I	IRRIGATION CONTROL - LINK SYSTEM			
2	S	FIELD SATELLITES			
3	C	PART CIRCLE SPRINKLER HEAD	583	80	80%
4	C	PART CIRCLE SPRINKLER HEAD	583	80	80%
5	C	PART CIRCLE SPRINKLER HEAD	262	80	75%
6	C	PART CIRCLE SPRINKLER HEAD	262	80	75%
7	C	PART CIRCLE SPRINKLER HEAD	271	80	75%
8	C	PART CIRCLE SPRINKLER HEAD	271	80	75%
9	C	MAIN IRIG. S. DUCT COUPLER			
10	C	MAIN IRIG. S. DUCT COUPLER			
11	V	LATERAL LINE GATE VALVE (VAC-CPIC 100)			
12	V	2" SHOWN VALVE (LOCATION T. B. 3.)			
13	V	2" SHOWN VALVE (LOCATION T. B. 3.)			
14	V	AIR RELEASE VALVE (LOCATION T. B. 3.)			
15	P	PUMP STATION			
16	W	WATER SUPPLY			
17	W	WATER SUPPLY			

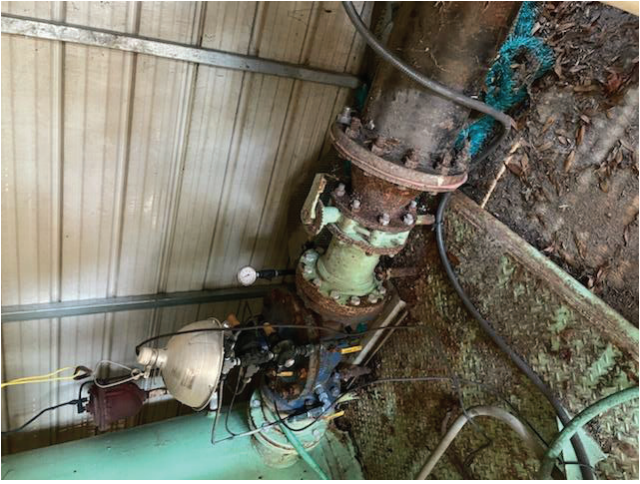


EXISTING METAL BUILDING
TO BE DEMOLISHED





EXISTING CONTROL PANELS TO BE DEMOLISHED



EXISTING PUMPS, TANK, PIPING, ELECTRICAL AND CONTROLS TO BE DEMOLISHED



EXISTING PUMPS, TANK, PIPING, ELECTRICAL AND CONTROLS TO BE DEMOLISHED

CONNECT NEW SYSTEM
TO THE EXISTING 200
AMP 600 WATT
DISCONNECT SWITCH

