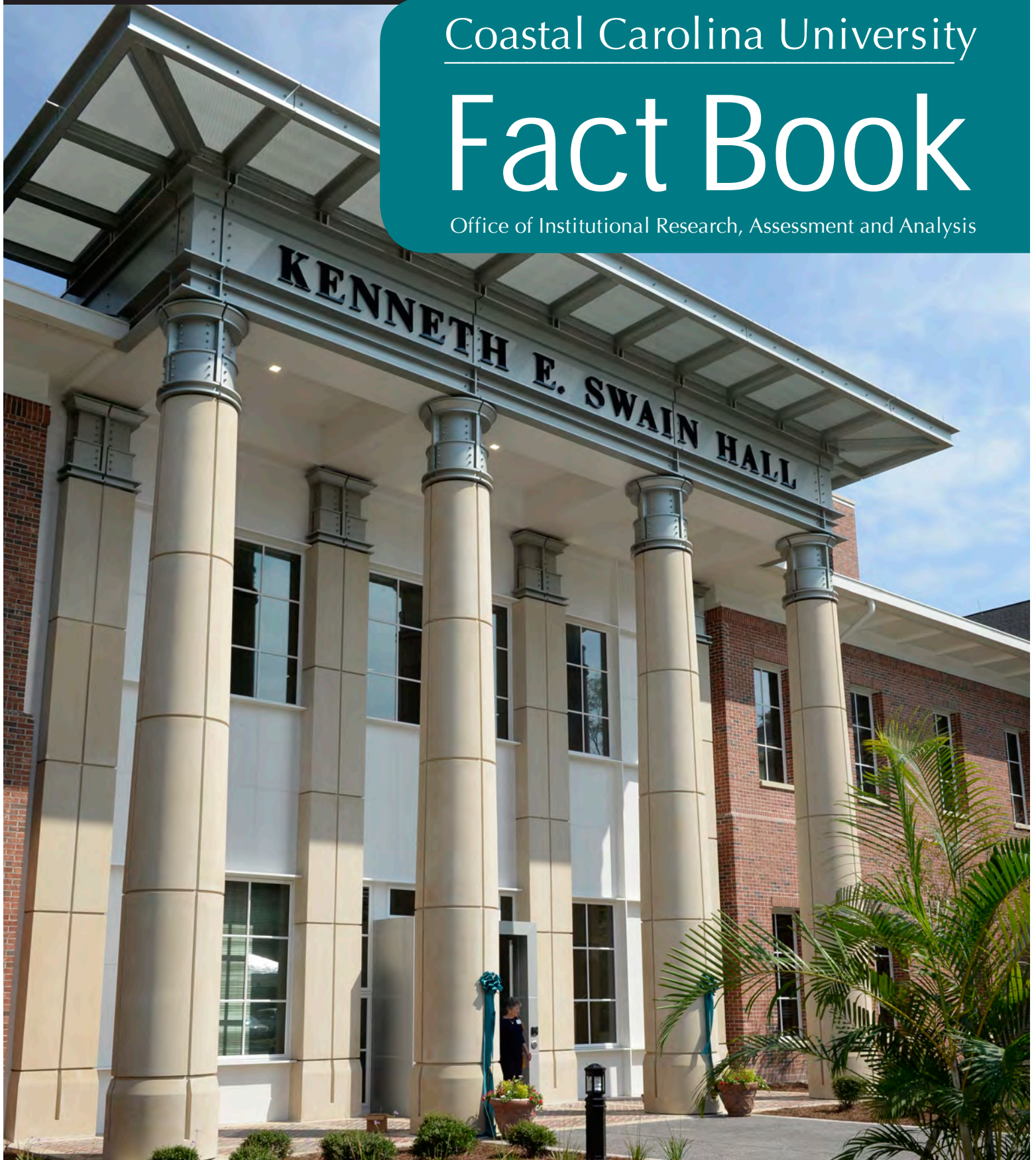


Coastal Carolina University

Fact Book

Office of Institutional Research, Assessment and Analysis



Fall 2014

COASTAL CAROLINA UNIVERSITY

OFFICE OF INSTITUTIONAL RESEARCH, ASSESSMENT AND ANALYSIS

FACT BOOK

FALL 2014

The mission of the Office of Institutional Research, Assessment and Analysis is to provide a centralized source for data collection, data analysis, data archives, and data management activities, and to provide support for assessment activities that inform and strengthen Coastal Carolina University's strategic planning process. In line with the goal of informing the strategic planning process, the *Fact Book* is published annually to provide relevant information to the University community. Furthermore, the *Fact Book* provides metrics and benchmarks to show the University's progression toward meeting the goals of the University's *Strategic Plan*. Items that meet these goals are noted in the highlights portion of each section.

The *Fact Book* addresses the following requirements of the Southern Association of Colleges and Schools Commission on Colleges, *The Principles of Accreditation: Foundations for Quality Enhancement* (2012 Edition).

Core Requirement 2.5: The institution engages in ongoing, integrated, and institution-wide research-based planning and evaluation processes that (1) incorporate a systematic review of institutional mission, goals, and outcomes; (2) result in continuing improvement in institutional quality; and (3) demonstrate the institution is effectively accomplishing its mission. (Institutional Effectiveness)

Comprehensive Standard 3.3.1: The institution identifies expected outcomes, assesses the extent to which it achieves these outcomes, and provides evidence of improvement based on analysis of the results in each of the following areas: (Institutional Effectiveness)

- 3.3.1.1 educational programs, to include student learning outcomes
- 3.3.1.2 administrative support services
- 3.3.1.3 academic and student support services
- 3.3.1.4 research within its mission, if appropriate
- 3.3.1.5 community/public service within its mission, if appropriate

The *Fact Book* is in alignment with the following supporting key strategies and goals from the *Coastal Carolina University Strategic Plan*:

Supporting Strategy 1: Improve Communication

Enhance Communication within Coastal Carolina University and among current and potential stakeholders.

Goal S1.1.Communication Effectiveness: Improve flow, efficiency, and effectiveness of communication throughout the University.

Supporting Strategy 2: Stronger Assessment and Accountability

Implement and maintain an environment of institutional effectiveness that is based on a culture of assessment, results in continuous improvement, and supports the University in effectively accomplishing its mission.

Goal S2.2.Documented Performance: Document and report relevant initiatives and performance outcomes that enable ongoing monitoring by campus members and outside stakeholders.

TABLE OF CONTENTS

ENROLLMENT

Enrollment Highlights.....	3
Summer Enrollment Trends.....	5
Fall and Spring Enrollment Trends	6
Fall Enrollment Trends by Race	7
Fall Enrollment Trends by Gender and Full-time/Part-time Status	8
Fall Enrollment Trends by Level	9
Fall Enrollment Trends by Level and Full-time/Part-time Status.....	10
Residency Classification of Students for Fee Payment Purposes.....	11
Geographic Distribution by South Carolina Counties	12
Geographic Distribution by State or Country	13

FIRST-TIME STUDENTS

First-time Students Highlights.....	17
New Student Orientation Attendance	19
Applications, Acceptances, and Enrollments.....	20
New Freshmen, Scholastic Aptitude Test (SAT) and American College Test (ACT) Scores	21
New Freshmen, High School Grade Point Average	22
New Freshmen, High School Course Prerequisites	23
New Freshmen Retention.....	24
First-time Full-time Freshmen One-Year Retention.....	25
Profile of First-time Full-time Freshmen.....	29

FIRST-TIME TRANSFER STUDENTS

First-time Transfer Students Highlights	35
Migration of Transfer Students to Coastal Carolina University	37
Migration of Transfer Students from Coastal Carolina University.....	38
New Transfer Student Retention	39
First-time Full-time Transfer Students One-Year Retention	40
Profile of First-time Full-time Transfer Students	43

ACADEMICS

Academic Highlights	49
Undergraduate Major by Class	51
Undergraduate Enrollment by Major	52
Graduate Enrollment by Major	53
Undergraduate Major by Average Age	54
Average Size of Lecture Classes by Discipline and Level	55
Average Grade Point Ratio by Class	56
Grade Distribution by Discipline	58
Credit Hour Production and Full Time Equivalent (FTE) Production by Discipline, Fall 2013	60
Credit Hour Production and FTE Production by Discipline, Fall 2014	61
Trends in Student/Faculty Ratio	62
Total Undergraduate Degrees Awarded by Major	63
Total Graduate Degrees Awarded by Major and/or Discipline	64
Total Degrees Awarded	65

FACULTY

Faculty Highlights	69
Summary of Employees Holding Faculty Rank	71
Faculty Profile by College	72
Faculty Profile by Academic Discipline, Fall 2013	74
Faculty Profile by Academic Discipline, Fall 2014	75
Profile of Full-time Teaching Faculty by Rank	76
Rank and Degree of Full-time Employees Holding Faculty Rank	77
Full-time Faculty by College and Rank	78
FTE Teaching Faculty by College and Rank	79
Full-time Faculty Nine-Month Salary Trends	80
Full-time Faculty Average Salary Comparison by Rank	81
Student Credit Hours Taught by Full-time Faculty	82
Student Credit Hours Taught by FTE Faculty	83

RESOURCES

Resources Highlights	87
Annual Tuition and Residence Hall Fees	89
S.C. Public Institutions Academic Year Costs; Tuition and Required Fees, 2014-2015 Academic Year Comparison of In-State to Out-of-State	90
Total Financial Aid Received by Coastal Carolina University Students from All Sources	92
Buildings Inventory	94

ENROLLMENT

TABLE OF CONTENTS

Enrollment Highlights	3
Summer Enrollment Trends	5
Fall and Spring Enrollment Trends.....	6
Fall Enrollment Trends by Race.....	7
Fall Enrollment Trends by Gender and Full-time/Part-time Status.....	8
Fall Enrollment Trends by Level.....	9
Fall Enrollment Trends by Level and Full-time/Part-time Status	10
Residency Classification of Students for Fee Payment Purposes	11
Geographic Distribution by South Carolina Counties.....	12
Geographic Distribution by State or Country.....	13

ENROLLMENT HIGHLIGHTS

Fact Book, 2014

Enrollment

- The total Fall 2014 enrollment was 9,976, representing an increase of 498 students (5%) from Fall 2013. The full-time equivalent (FTE) for Fall 2014 increased 6% to 9,437 during the same period.
- The total Fall 2014 undergraduate enrollment was 9,364, representing an increase of 497 students (6%) from Fall 2013.
- Undergraduate degree and non-degree-seeking students comprised 94% of the total Fall 2014 enrollment with graduate degree and non-degree-seeking students accounting for 6% of the student population. Graduate degree-seeking students have increased 52% since Fall 2010.
- Since 2001, the number of students attending May, Summer I, and Summer II semesters has grown from 4,001 to 4,112 (3%). In the same period, the number of credit hours taken increased from 15,417 to 16,476 (7%).

Demographics

- Female students made up 54% of the total undergraduate enrollment and 68% of the total graduate enrollment for Fall 2014.
- In Fall 2014, 91% of all undergraduate students were enrolled full-time.
- Fifty-two percent (52%) of all students enrolled are from the state of South Carolina. In Fall 2014, the largest percentage of out-of-state students came from New Jersey (7%), New York (6%), and Maryland (6%). International student enrollment accounted for 163 (2%) students.
- In Fall 2014, all South Carolina counties were represented in the total student enrollment with Horry County representing the largest number of students at 2,269 (44%) followed by Georgetown at 342 (7%), Richland at 333 (6%), and Charleston at 227 (4%) counties.
- The most prominent ethnic groups represented in Fall 2014 were White/non-Hispanic (70%) and Black/African American (19%).

The *Enrollment* section is in alignment with the following supporting key strategies and goals from the *Coastal Carolina University Strategic Plan*:

Strategy 1: Meeting the Educational Needs of Students and Community

Expand degree and non-degree program offerings and formats while maintaining quality in all programs.

Goal 1.3. Improved Access to Education: Enhance accessibility of education at Coastal Carolina University while maintaining quality standards.

Goal 1.4. Enhanced Global Perspective: Create a campus culture that generates greater awareness of the global environment and promotes increased participation in and exposure to the world.

Strategy 2: Ensuring Student Success

Increase retention and graduation rates by supporting programs and services that enrich the student learning and living environment and broaden the diversity of students seeking Coastal Carolina University as their choice for educational advancement.

Goal 2.1. Talented and Diverse Student Body: Implement a comprehensive enrollment strategy to recruit and retain an academically talented and diverse student body.

Strategy 4: Ensuring Financial Viability and Managed Growth

Ensure responsible financial management practices that are based on a clear commitment to enrollment growth and consistent with the mission of the University.

Goal 4.1. Comprehensive Financial Plan: Develop, implement, and communicate a comprehensive financial plan that includes projections of tuition, state support, grant support, and philanthropy.

SUMMER ENROLLMENT TRENDS 2001-2014

Year	May Semester		Summer I Semester		Summer II Semester		Total	
	# Students	# Hours	# Students	# Hours	# Students	# Hours	# Students	# Hours
2001	567	2,131	1,802	7,271	1,632	6,015	4,001	15,417
2002	653	2,377	1,993	7,194	1,233	4,333	3,879	13,904
2003	765	2,787	1,650	6,606	897	3,643	3,312	13,036
2004	748	2,632	1,607	6,626	992	3,958	3,347	13,216
2005	687	2,368	1,530	6,093	1,026	4,345	3,243	12,806
2006	617	2,185	1,596	6,428	1,126	4,443	3,339	13,056
2007	714	2,459	1,565	6,061	1,103	4,213	3,382	12,733
2008	686	2,505	1,360	5,334	1,075	4,118	3,121	11,957
2009	682	2,619	1,370	5,498	996	3,884	3,048	12,001
2010	819	3,132	1,801	7,147	1,155	4,587	3,775	14,866
2011	845	3,286	1,612	6,444	1,191	4,905	3,648	14,635
2012	826	3,216	1,606	6,462	1,070	4,239	3,502	13,917
2013	771	3,091	1,809	7,275	1,190	4,537	3,770	14,903
2014	923	3,630	1,857	7,563	1,332	5,283	4,112	16,476

**FALL AND SPRING SEMESTER
ENROLLMENT TRENDS
1993-2014**

FALL SEMESTER			SPRING SEMESTER		
Term	Headcount	FTE	Term	Headcount	FTE
1993*	4,453	3,610	1994*	3,771	3,043
1994	4,542	3,646	1995	3,976	3,150
1995	4,468	3,656	1996	3,849	3,303
1996	4,477	3,793	1997	4,036	3,352
1997	4,408	3,874	1998	3,999	3,565
1998	4,556	3,943	1999	4,150	3,650
1999	4,615	3,991	2000	4,163	3,635
2000	4,653	4,101	2001	4,529	3,908
2001	4,965	4,487	2002	4,853	4,280
2002	5,980	5,095	2003	5,597	4,841
2003	6,780	5,795	2004	5,998	5,302
2004	7,021	6,141	2005	6,222	5,562
2005	7,613	6,576	2006	6,571	5,828
2006	8,049	6,944	2007	6,854	6,173
2007	7,872	7,177	2008	7,007	6,429
2008	8,154	7,610	2009	7,417	6,800
2009	8,360	7,865	2010	7,760	7,200
2010	8,706	8,302	2011	8,005	7,506
2011	9,084	8,720	2012	8,337	7,898
2012	9,335	8,859	2013	8,517	7,860
2013	9,478	8,870	2014	8,705	7,985
2014	9,976	9,437			

* Date of official counts changed to Oct. 30 for Fall and March 30 for Spring.

**FALL ENROLLMENT TRENDS
BY RACE
FALL SEMESTERS 2009-2014**

UNDERGRADUATE

	<u>FALL 2009</u>	<u>FALL 2010</u>	<u>FALL 2011</u>	<u>FALL 2012</u>	<u>FALL 2013</u>	<u>FALL 2014</u>	<u>5-YEAR % CHANGE</u>
<u>ETHNICITY</u>							
Hispanic/Latino	219	257	273	306	321	336	53.4%
<u>RACE</u>							
American Indian/Alaskan Native	40	28	33	26	33	35	-12.5%
Asian	77	64	60	70	64	73	-5.2%
Black/African American	1,168	1,452	1,640	1,746	1,799	1,826	56.3%
Native Hawaiian/Pacific Islander	6	11	16	11	12	11	83.3%
White	6,171	6,124	6,174	6,201	6,114	6,518	5.6%
Two or More Races	92	147	183	220	302	401	335.9%
Non-Resident Alien	102	97	117	150	124	118	15.7%
Unknown	45	23	21	16	98	46	2.2%
TOTAL	7,920	8,203	8,517	8,746	8,867	9,364	18.2%

GRADUATE

	<u>FALL 2009</u>	<u>FALL 2010</u>	<u>FALL 2011</u>	<u>FALL 2012</u>	<u>FALL 2013</u>	<u>FALL 2014</u>	<u>5-YEAR % CHANGE</u>
<u>ETHNICITY</u>							
Hispanic/Latino	2	2	8	5	6	12	500.0%
<u>RACE</u>							
American Indian/Alaskan Native	1	3	2	1	1	5	400.0%
Asian	4	1	2	2	1	4	0.0%
Black/African American	47	52	62	55	78	78	66.0%
Native Hawaiian/Pacific Islander	1	1	2	3	2	2	100.0%
White, non-Hispanic	370	427	467	503	501	481	30.0%
Two or More Races	1	3	2	2	3	4	300.0%
Non-Resident Alien	7	12	17	9	14	19	171.4%
Unknown	7	2	5	9	5	7	0.0%
TOTAL	440	503	567	589	611	612	39.1%

Note: Institutions required to use new Integrated Postsecondary Education Data System (IPEDS) racial/ethnic categories for reporting.

**FALL ENROLLMENT TRENDS
BY GENDER AND FULL-TIME/PART-TIME STATUS
FALL SEMESTERS 2010-2014**

UNDERGRADUATE

	Male		Female		Total
	#	%	#	%	
Fall 2010					
Full-time	3,520	42.9%	4,019	49.0%	7,539
Part-time	296	3.6%	368	4.5%	664
Total	3,816	46.5%	4,387	53.5%	8,203
Fall 2011					
Full-time	3,673	43.1%	4,176	49.0%	7,849
Part-time	293	3.4%	375	4.4%	668
Total	3,966	46.6%	4,551	53.4%	8,517
Fall 2012					
Full-time	3,690	42.2%	4,226	48.3%	7,916
Part-time	367	4.2%	463	5.3%	830
Total	4,057	46.4%	4,689	53.6%	8,746
Fall 2013					
Full-time	3,762	42.4%	4,270	48.2%	8,032
Part-time	335	3.8%	500	5.6%	835
Total	4,097	46.2%	4,770	53.8%	8,867
Fall 2014					
Full-time	3,941	42.1%	4,561	48.7%	8,502
Part-time	344	3.7%	518	5.5%	862
Total	4,285	45.8%	5,079	54.2%	9,364

GRADUATE

	Male		Female		Total
	#	%	#	%	
Fall 2010					
Full-time	51	10.1%	77	15.3%	128
Part-time	83	16.5%	292	58.1%	375
Total	134	26.6%	369	73.4%	503
Fall 2011					
Full-time	61	10.8%	74	13.1%	135
Part-time	116	20.5%	316	55.7%	432
Total	177	31.2%	390	68.8%	567
Fall 2012					
Full-time	74	12.6%	81	13.8%	155
Part-time	104	17.7%	330	56.0%	434
Total	178	30.2%	411	69.8%	589
Fall 2013					
Full-time	69	11.3%	98	16.0%	167
Part-time	109	17.8%	335	54.8%	444
Total	178	29.1%	433	70.9%	611
Fall 2014					
Full-time	92	15.0%	90	14.7%	182
Part-time	104	17.0%	326	53.3%	430
Total	196	32.0%	416	68.0%	612

**FALL ENROLLMENT TRENDS
BY LEVEL
FALL SEMESTERS 2010-2014**

	Fall 2010	Fall 2011	Fall 2012	Fall 2013	Fall 2014
Undergraduate Degree Seeking					
New Freshman	2,006	2,137	2,206	2,095	2,375
New Transfer	840	779	801	779	834
Other Freshman	485	536	501	561	481
Sophomore	1,387	1,523	1,590	1,619	1,713
Junior	1,469	1,507	1,501	1,638	1,682
Senior	1,787	1,815	1,867	1,878	1,973
Total	7,974	8,297	8,466	8,570	9,058
Undergraduate Non-Degree Seeking	229	220	280	297	306
Total Undergraduate	8,203	8,517	8,746	8,867	9,364
Graduate Degree Seeking	331	383	398	460	503
Graduate Non-Degree Seeking	172	184	191	151	109
Total Graduate	503	567	589	611	612
Total Enrollment	8,706	9,084	9,335	9,478	9,976

**FALL ENROLLMENT TRENDS BY LEVEL AND FULL-TIME / PART-TIME STATUS
FALL SEMESTERS 2009-2014**

	Fall 2009	Fall 2010	2009-2010	Fall 2011	2010-2011	Fall 2012	2011-2012	Fall 2013	2012-2013	Fall 2014	2013-2014
	Enrolled	Enrolled	% Change	Enrolled	% Change	Enrolled	% Change	Enrolled	% Change	Enrolled	% Change
<u>Undergraduate</u>											
Full-Time	7,138	7,539	5.6%	7,849	4.1%	7,916	0.9%	8,032	1.5%	8,502	5.9%
Part-time	782	664	-15.1%	668	0.6%	830	24.3%	835	0.6%	862	3.2%
Undergraduate Totals	7,920	8,203	3.6%	8,517	3.8%	8,746	2.7%	8,867	1.4%	9,364	5.6%
<u>Graduate</u>											
Full-Time	116	128	10.3%	135	5.5%	155	14.8%	167	7.7%	182	9.0%
Part-time	324	375	15.7%	432	15.2%	434	0.5%	444	2.3%	430	-3.2%
Graduate Totals	440	503	14.3%	567	12.7%	589	3.9%	611	3.7%	612	0.2%
<u>New Students</u>											
Freshman	1,775	2,006	13.0%	2,137	6.5%	2,206	3.2%	2,095	-5.0%	2,375	13.4%
Transfer	754	840	11.4%	779	-7.3%	801	2.8%	779	-2.7%	834	7.1%
Graduate	186	153	-17.7%	177	15.7%	189	6.8%	230	21.7%	258	12.2%
New Student Totals	2,715	2,999	10.5%	3,093	3.1%	3,196	3.3%	3,104	-2.9%	3,467	11.7%
Grand Totals	8,360	8,706	4.1%	9,084	4.3%	9,335	2.8%	9,478	1.5%	9,976	5.3%

Undergraduate

Full-Time
Part-time
Undergraduate Totals

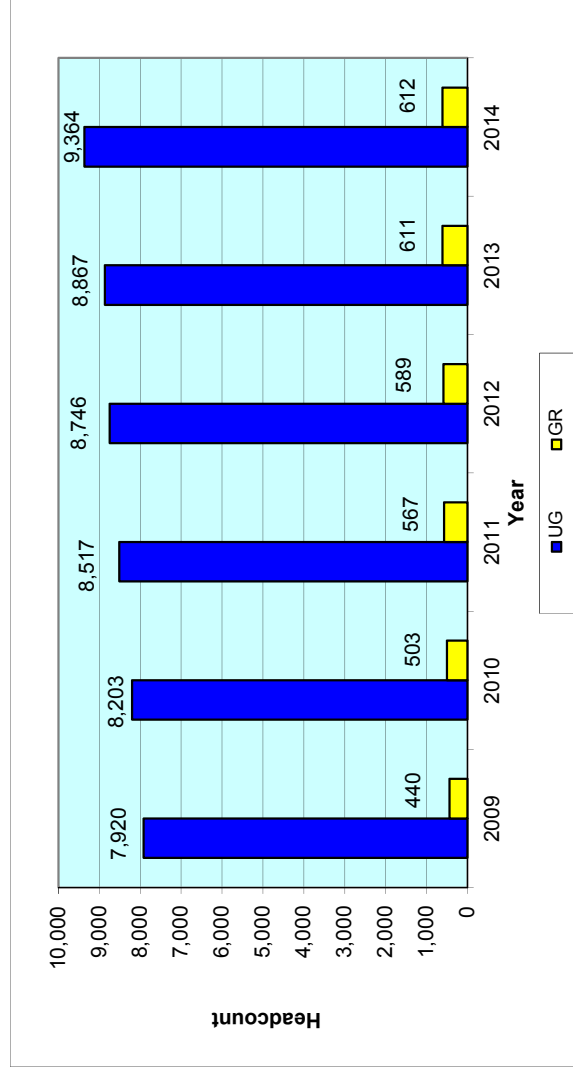
Graduate

Full-Time
Part-time
Graduate Totals

New Students

Freshman
Transfer
Graduate
New Student Totals

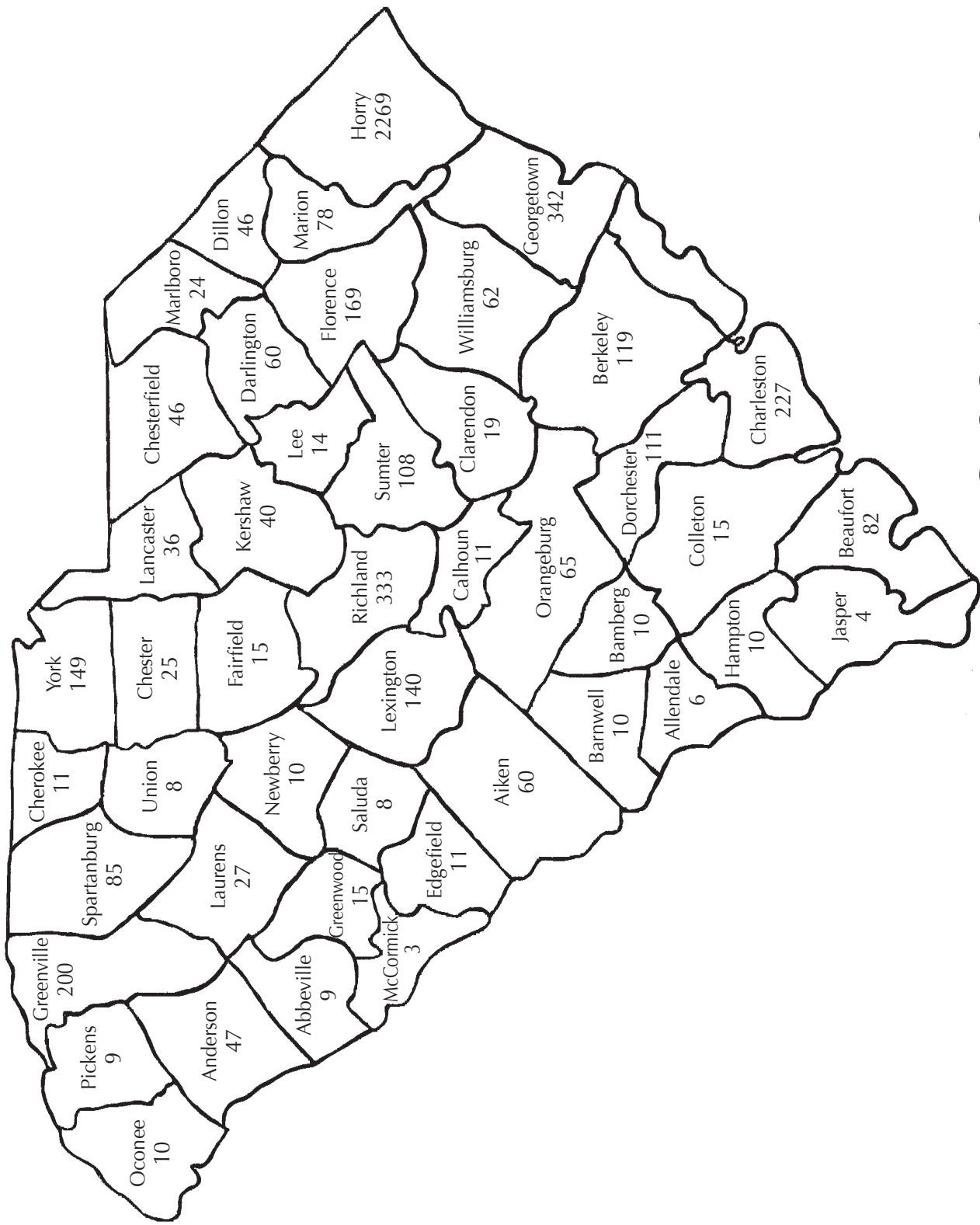
Grand Totals



**RESIDENCY CLASSIFICATION OF STUDENTS
FOR FEE PAYMENT PURPOSES*
2010-2014**

	In-State	%	Out-of-State	%	Total
2010					
Undergraduate	5,796	66.6%	2,407	27.6%	8,203
Graduate	469	5.4%	34	0.4%	503
Total	6,265	72.0%	2,441	28.0%	8,706
2011					
Undergraduate	6,013	66.2%	2,504	27.6%	8,517
Graduate	530	5.8%	37	0.4%	567
Total	6,543	72.0%	2,541	28.0%	9,084
2012					
Undergraduate	6,327	67.8%	2,419	25.9%	8,746
Graduate	550	5.9%	39	0.4%	589
Total	6,877	73.7%	2,458	26.3%	9,335
2013					
Undergraduate	6,514	68.7%	2,353	24.8%	8,867
Graduate	565	6.0%	46	0.5%	611
Total	7,079	74.7%	2,399	25.3%	9,478
2014					
Undergraduate	6,889	69.1%	2,475	24.8%	9,364
Graduate	587	5.9%	25	0.3%	612
Total	7,476	74.9%	2,500	25.1%	9,976

*Residency classification for fee payment purposes is defined by South Carolina statute.



GEOGRAPHIC DISTRIBUTION

FALL 2014

**GEOGRAPHIC DISTRIBUTION OF ENROLLMENT
BY STATE OR COUNTRY
FALL 2014**



Alabama	8	New Jersey	686	Canada	3	Nepal	1
Arizona	14	New Mexico	1	China	10	New Zealand	1
Arkansas	4	New York	581	Colombia	5	Nigeria	3
California	27	North Carolina	294	Costa Rica	1	Norway	1
Colorado	14	North Dakota	1	Cyprus	1	Pakistan	1
Connecticut	256	Ohio	154	Denmark	2	Philippines	1
Delaware	59	Oklahoma	6	Ecuador	1	Poland	1
District of Columbia	13	Oregon	3	Egypt	1	Qatar	1
Florida	57	Pennsylvania	497	France	11	Russia	12
Georgia	67	Rhode Island	31	Germany	15	Saudi Arabia	1
Hawaii	3	South Carolina	5158	Greece	1	Senegal	1
Illinois	89	South Dakota	1	Haiti	1	Serbia	4
Indiana	23	Tennessee	42	Honduras	1	Slovakia	2
Iowa	10	Texas	29	Hungary	4	South Africa	4
Kansas	3	US Armed Forces - Pacific	2	Iceland	8	South Korea	2
Kentucky	50	Vermont	32	India	2	Spain	1
Louisiana	2	Virginia	461	Ireland	1	Sweden	2
Maine	20	Washington	7	Israel	5	Syria	1
Maryland	566	West Virginia	52	Italy	1	Trinidad and Tobago	1
Massachusetts	323	<u>Wisconsin</u>	<u>25</u>	Jamaica	3	Ukraine	2
Michigan	48	Albania	3	Japan	3	United Arab Emirates	1
Minnesota	8	Australia	3	Macedonia	1	United Kingdom	7
Mississippi	2	Bahamas	1	Malaysia	1	Uzbekistan	1
Missouri	16	Belarus	2	Mauritius	1	Vietnam	2
Montana	3	Brazil	3	Mexico	4		
Nebraska	5	Bulgaria	5	Montenegro	1		
New Hampshire	60	Cameroon	3	Morocco	1		
						In-State	5,158
						Out-of-State	4,655
						International	163
						Total	9,976

FIRST-TIME STUDENTS

TABLE OF CONTENTS

First-time Students Highlights	17
New Student Orientation Attendance	19
Applications, Acceptances, and Enrollments	20
New Freshmen, SAT and ACT Scores	21
New Freshmen, High School Grade Point Average	22
New Freshmen, High School Course Prerequisites	23
New Freshmen Retention	24
First-time Full-time Freshmen One-Year Retention	25
Profile of First-time Full-time Freshmen	29

FIRST-TIME STUDENTS HIGHLIGHTS

Fact Book, 2014

Enrollment and academic trends for first-time students show the following:

- Applications from new undergraduate students increased 54% between Fall 2010 and Fall 2014. New student acceptances increased by 30%, and new student enrollment increased 13% during this period. In Fall 2014, 29% of all accepted applicants enrolled.
- The average SAT score for Fall 2014 freshmen was 1,001, exceeding the average South Carolina high school score of 978. The average ACT composite score of 21 for freshmen was equal to the national average (21) and was one point greater than the South Carolina statewide average (20) for the Fall 2014 cohort.
- The Fall 2014 freshman cohort average high school GPA of 3.37 decreased from the Fall 2013 cohort average high school GPA of 3.40. Since 2010 the freshman cohort average high school GPA has increased from 3.34 to 3.37. Seventy-five percent (75%) of Fall 2014 first-time full-time freshmen reported high school GPAs equal to or exceeding 3.00. Thirty-three percent (33%) indicated a high school GPA between 3.00 and 3.49; 42% reported a GPA of 3.50 or higher.
- Of the 2,084 Fall 2013 first-time full-time freshman cohort, 1,396 students (67%) chose to continue their studies at the University for Fall 2014. The one-year retention for the 2013 cohort is 67%, higher than the one-year retention for the Fall 2012 cohort (63%).
- In geographic origin, 639 (46%) continuing students were native to South Carolina and 757 (54%) students were from other U.S. states and international origins.
- Among the academic colleges, the continuation of first-time full-time freshmen for Fall 2013 to Fall 2014: Wall College of Business Administration (70%), Spadoni College of Education (64%), Edwards College of Humanities and Fine Arts (73%), College of Science (67%), and University College (58%).

Demographics - First-Time Full-Time Freshmen - Fall 2014

- The most prominent ethnic groups among the Fall 2014 first-time full-time freshmen were White (71%), Black/African American (18%), and Two or More Races (5%).

Female students outnumbered male students in the Fall 2014 full-time first-time freshman cohort with 55% of the total.

- Ninety-nine percent of Fall 2014 first-time full-time freshmen were under 20 years of age.
- Sixteen percent (16%) of first-time full-time freshmen originated from the immediate five-county service area of Dillon, Georgetown, Horry, Marion, and Williamsburg counties. Approximately 25% originated from other South Carolina counties.
- In Fall 2014, 11% of first-time full-time freshmen had not declared a major. The four most popular undergraduate majors at Coastal Carolina University among first-time freshmen were: Marine Science (14%), Exercise and Sport Science (9%), Management (8%), and Biology (7%).

The *First-Time Students* section is in alignment with the following supporting key strategies and goals from the *Coastal Carolina University Strategic Plan*:

Strategy 1: Meeting the Educational Needs of Students and Community

Expand degree and non-degree program offerings and formats while maintaining quality in all programs.

Goal 1.2. Appropriate Educational Initiatives: Promote high quality educational programs and services that are aligned with available resources to meet the needs of our constituencies.

Goal 1.3. Improved Access to Education: Enhance accessibility of education at Coastal Carolina University while maintaining quality standards.

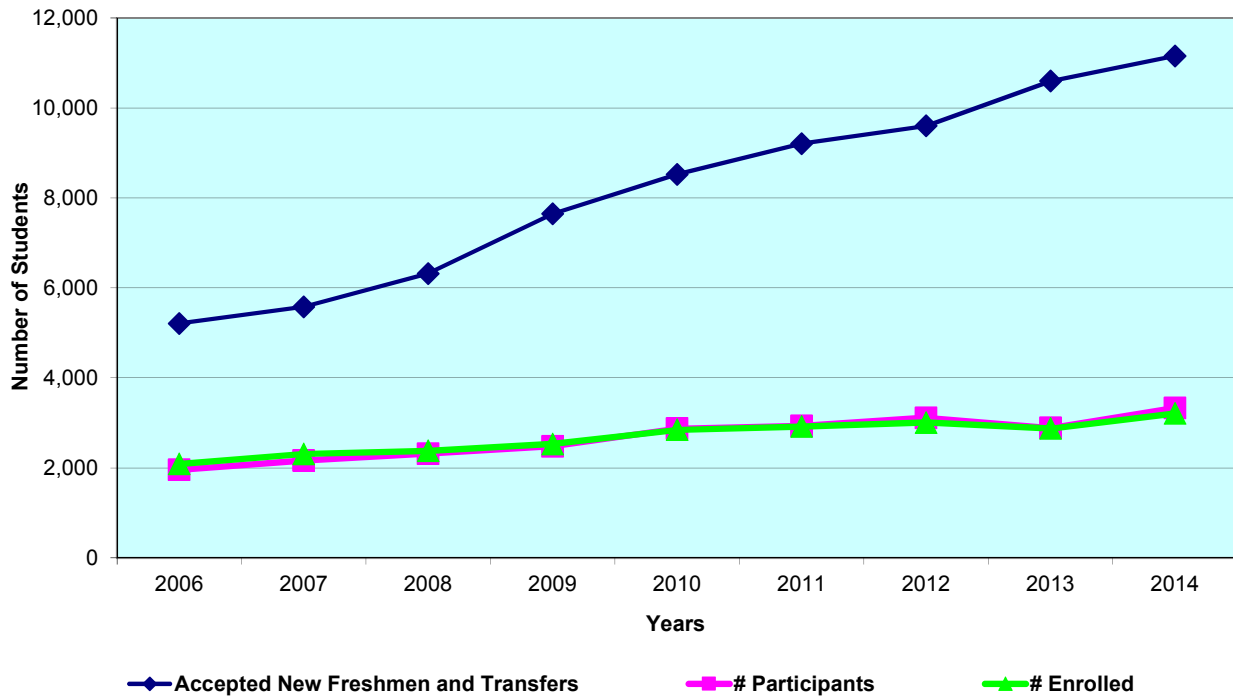
Strategy 2: Ensuring Student Success

Increase retention and graduation rates by supporting programs and services that enrich the student learning and living environment and broaden the diversity of students seeking Coastal Carolina University as their choice for educational advancement.

Goal 2.1. Talented and Diverse Student Body: Implement a comprehensive enrollment strategy to recruit and retain an academically talented and diverse student body.

NEW STUDENT ORIENTATION ATTENDANCE AND NUMBER/PERCENT ENROLLED SUMMER 2006-2014

<u>YEAR</u>	<u>TOTAL ACCEPTED NEW FRESHMEN AND TRANSFERS</u>	<u># FRESHMEN & TRANSFERS ATTENDED ORIENTATION</u>	<u>% FRESHMEN & TRANSFERS ATTENDED ORIENTATION</u>	<u># NEW FRESHMEN & TRANSFERS ENROLLED</u>	<u>% ENROLLED</u>
2006	5,212	1,956	37.5%	2,089	40.1%
2007	5,580	2,161	38.7%	2,310	41.4%
2008	6,321	2,316	36.6%	2,376	37.6%
2009	7,646	2,480	32.4%	2,529	33.1%
2010	8,525	2,873	33.7%	2,846	33.4%
2011	9,207	2,930	31.8%	2,916	31.7%
2012	9,601	3,111	32.4%	3,007	31.3%
2013	10,598	2,888	27.3%	2,874	27.1%
2014	11,157	3,331	29.9%	3,209	28.8%



**APPLICATIONS, ACCEPTANCES, AND ENROLLMENTS
FALL SEMESTERS 2010-2014
UNDERGRADUATE**

	2010	2011	2012	2013	2014
APPLICATIONS RECEIVED*					
Freshmen	9,639	10,502	10,993	14,050	14,799
Transfer	2,020	2,008	2,225	3,135	3,331
Other	748	528	658	942	951
TOTAL	12,407	13,038	13,876	18,127	19,081
ACCEPTED FOR ADMISSION					
Freshmen	7,170	7,836	8,139	9,014	9,412
Transfer	1,355	1,333	1,462	1,584	1,745
Other	676	477	576	798	839
TOTAL	9,201	9,646	10,177	11,396	11,996
DENIED ADMISSION					
Freshmen	1,657	2,486	2,579	4,621	4,476
Transfer	334	242	410	242	758
Other	5	5	4	10	4
TOTAL	1,996	2,733	2,993	4,873	5,238
ENROLLED					
Freshmen	2,006	2,137	2,206	2,095	2,375
Transfer	840	779	801	779	834
Other	224	206	254	232	254
TOTAL	3,070	3,122	3,261	3,106	3,463
PERCENT OF ACCEPTED APPLICANTS ENROLLING					
Freshmen	28%	27%	27%	23%	25%
Transfer	62%	58%	55%	49%	48%
Other	33%	43%	44%	29%	30%
TOTAL	33%	32%	32%	27%	29%

*includes incomplete applications

**NEW FRESHMEN
SAT AND ACT SCORES
FALL SEMESTERS 2010-2014**

	Fall 2010		Fall 2011		Fall 2012		Fall 2013		Fall 2014	
	#	%	#	%	#	%	#	%	#	%
SAT TOTAL SCORE										
< 800	0	0.0%	0	0.0%	2	0.1%	10	0.7%	22	1.5%
800-899	234	17.4%	250	17.7%	243	17.9%	223	15.8%	263	17.4%
900-999	413	30.7%	392	27.7%	489	36.0%	490	34.7%	490	32.5%
1000-1099	405	30.1%	438	31.0%	366	26.9%	415	29.4%	437	29.0%
1100-1199	200	14.9%	221	15.6%	164	12.1%	190	13.5%	196	13.0%
1200-1299	77	5.7%	90	6.4%	72	5.3%	68	4.8%	89	5.9%
> 1299	17	1.3%	22	1.6%	24	1.8%	15	1.1%	12	0.8%
Average SAT Score	1008		1013		1000		1000		1001	
South Carolina Average	979		972		969		971		978	
National Average	1017		1011		1010		1010		1010	
ACT COMPOSITE SCORE										
<18	91	14.0%	75	10.4%	58	6.9%	44	6.5%	83	9.6%
18	105	16.1%	115	16.0%	120	14.2%	80	11.8%	113	13.1%
19	115	17.7%	127	17.6%	143	16.9%	86	12.7%	112	13.0%
20	98	15.1%	103	14.3%	122	14.4%	81	12.0%	114	13.2%
21	81	12.4%	84	11.7%	88	10.4%	90	13.3%	92	10.7%
22	53	8.1%	67	9.3%	70	8.3%	70	10.3%	77	8.9%
>22	108	16.6%	150	20.8%	244	28.9%	226	33.4%	271	31.4%
Average ACT Score	20		21		21		22		21	
South Carolina Average	20		20		20		20		20	
National Average	21		21		21		21		21	

**NEW FRESHMEN
HIGH SCHOOL GRADE POINT AVERAGE
FALL SEMESTERS 2010-2014**

<u>High School GPA</u>	<u>Fall 2010</u>	<u>Fall 2011</u>	<u>Fall 2012</u>	<u>Fall 2013</u>	<u>Fall 2014</u>
< 1.75 %	0 0.0%	0 0.0%	0 0.0%	1 0.0%	0 0.0%
1.75-1.99 %	5 0.3%	0 0.0%	0 0.0%	0 0.0%	1 0.0%
2.00-2.49 %	126 6.3%	122 5.7%	114 5.2%	84 4.1%	119 5.0%
2.50-2.99 %	432 21.7%	476 22.4%	515 23.4%	417 20.1%	473 20.0%
3.00-3.49 %	642 32.2%	684 32.2%	744 33.9%	700 33.8%	772 32.7%
>=3.50 %	787 39.5%	845 39.7%	824 37.5%	872 42.0%	996 42.2%
Total with High School GPA	1,992	2,127	2,197	2,074	2,361
Average High School GPA	3.34	3.34	3.32	3.40	3.37
South Carolina Average	3.42	3.41	3.44	3.48	3.51
National Average	3.34	3.34	3.36	3.38	3.39

**NEW FRESHMEN HIGH SCHOOL COURSE PREREQUISITES
FOR PUBLIC COLLEGE/UNIVERSITY ADMISSION
% MEETING REQUIREMENT
FALL SEMESTERS 2010-2014**

South Carolina Required Prerequisites	2010	2011*	2012	2013	2014
English (4 units)	100.0%	100.0%	100.0%	100.0%	100.0%
Mathematics (4 units)	100.0%	96.0%	98.3%	99.0%	99.1%
Laboratory Science (3 units)	98.5%	99.2%	99.9%	99.9%	99.9%
Foreign Language (2 units)	98.8%	98.7%	98.5%	99.4%	98.3%
Social Studies (2 units)	100.0%	99.9%	100.0%	99.9%	99.9%
History (1 unit)	100.0%	100.0%	100.0%	100.0%	100.0%
Advanced Electives (1 unit)	99.4%	100.0%	100.0%	99.9%	100.0%
Visual/Performing Arts (1 unit)	N/A	97.4%	97.1%	99.4%	99.8%
Physical Education (1 unit)	99.7%	100.0%	99.5%	99.9%	100.0%
All Courses	96.5%	92.4%	93.7%	97.6%	97.1%

*Prerequisites changed Fall 2011

**NEW FRESHMEN RETENTION
FALL SEMESTERS 2008-2014**

	2008	2009	2010	2011	2012	2013	2014
# NEW FULL-TIME FRESHMEN	1,643	1,769	1,999	2,128	2,200	2,084	2,374
Adjustments to Cohort	2						
Adjusted Cohort*	1,641						
Returned 2nd Year	1,083	1,141	1,256	1,275	1,378	1,396	
	66.0%	64.5%	62.8%	59.9%	62.6%	67.0%	
Returned 3rd Year	898	919	1,010	1,059	1,130		
	54.7%	52.0%	50.5%	49.8%	51.4%		
Returned 4th Year	824	842	920	992			
	50.2%	47.6%	46.0%	46.6%			
AFTER 4TH YEAR							
Graduated	422	465	530				
	25.7%	26.3%	26.5%				
Returned	359	358	363				
	21.9%	20.2%	18.2%				
Total Retention	781	823	893				
	47.6%	46.5%	44.7%				
AFTER 5TH YEAR							
Graduated	700	713					
	42.7%	40.3%					
Returned	73	92					
	4.4%	5.2%					
Total Retention	773	805					
	47.1%	45.5%					
AFTER 6TH YEAR							
Graduated	742						
	45.2%						
Returned	39						
	2.4%						
Total Retention	781						
	47.6%						

Cohort	%
2004	43.0%
2005	46.3%
2006	47.3%
2007	45.8%
2008	45.2%

*For reporting purposes, six-year graduation rate is based on Adjusted Cohort.

**FIRST-TIME FULL-TIME FRESHMEN
COMPARISON OF CONTINUING AND NON-CONTINUING
FALL 2013 - FALL 2014**

	FRESHMEN		CONTINUING		NON-CONTINUING	
	Number	Percent	Number	Percent	Number	Percent
ETHNICITY						
Hispanic/Latino	84	4.0%	49	58.3%	35	41.7%
RACE						
American Indian/Alaskan Native	11	0.5%	6	54.5%	5	45.5%
Asian	13	0.6%	8	61.5%	5	38.5%
Black/African American	419	20.2%	292	69.7%	127	30.3%
Native Hawaiian/Pacific Islander	3	0.1%	1	33.3%	2	66.7%
White	1,422	68.5%	951	66.9%	471	33.1%
Two or More Races	108	5.2%	70	64.8%	38	35.2%
Non-Resident Alien	15	0.7%	13	86.7%	2	13.3%
Unknown	9	---	6	66.7%	3	33.3%
Total	2,084	100.0%	1,396	67.0%	688	33.0%
GENDER						
Men	945	45.3%	618	65.4%	327	34.6%
Women	1,139	54.7%	778	68.3%	361	31.7%
Total	2,084	100.0%	1,396	67.0%	688	33.0%
AGE						
less than 20	2,049	98.3%	1,380	67.3%	669	32.7%
20-22	28	1.3%	14	50.0%	14	50.0%
23-24	3	0.1%	1	33.3%	2	66.7%
25-29	2	0.1%	1	50.0%	1	50.0%
30-39	1	0.0%	0	0.0%	1	100.0%
40-49	0	---	0	---	0	---
50+	1	0.0%	0	0.0%	1	100.0%
No Report	0	---	0	---	0	---
Total	2,084	100.0%	1,396	67.0%	688	33.0%
GEOGRAPHIC LOCATION						
In-State	954	45.8%	639	67.0%	315	33.0%
Out-of-State	1,110	53.3%	740	66.7%	370	33.3%
International	20	1.0%	17	85.0%	3	15.0%
Total	2,084	100.0%	1,396	67.0%	688	33.0%
IN-STATE						
Five-County Service Area						
Dillon	9	2.5%	8	88.9%	1	11.1%
Georgetown	30	8.3%	20	66.7%	10	33.3%
Horry	288	80.0%	203	70.5%	85	29.5%
Marion	12	3.3%	9	75.0%	3	25.0%
Williamsburg	21	5.8%	15	71.4%	6	28.6%
Total	360	100.0%	255	70.8%	105	29.2%
Other SC Counties						
Charleston	61	10.3%	45	73.8%	16	26.2%
Florence	33	5.6%	22	66.7%	11	33.3%
Greenville	50	8.4%	31	62.0%	19	38.0%
Lexington	31	5.2%	21	67.7%	10	32.3%
York	43	7.2%	27	62.8%	16	37.2%
Other	376	63.3%	238	63.3%	138	36.7%
Total	594	100.0%	384	64.6%	210	35.4%

**FIRST-TIME FULL-TIME FRESHMEN
COMPARISON OF CONTINUING AND NON-CONTINUING
FALL 2013 - FALL 2014**

	FRESHMEN		CONTINUING		NON-CONTINUING	
	Number	Percent	Number	Percent	Number	Percent
OUT-OF-STATE						
Connecticut	59	5.2%	40	67.8%	19	32.2%
Illinois	28	2.5%	13	46.4%	15	53.6%
Maryland	144	12.7%	94	65.3%	50	34.7%
Massachusetts	71	6.3%	54	76.1%	17	23.9%
New Jersey	148	13.1%	105	70.9%	43	29.1%
New York	116	10.3%	76	65.5%	40	34.5%
North Carolina	71	6.3%	36	50.7%	35	49.3%
Ohio	36	3.2%	23	63.9%	13	36.1%
Pennsylvania	108	9.6%	76	70.4%	32	29.6%
Virginia	149	13.2%	98	65.8%	51	34.2%
Other	180	15.9%	125	69.4%	55	30.6%
International	20	1.8%	17	85.0%	3	15.0%
Total	1,130	100.0%	757	67.0%	373	33.0%
SAT TOTAL SCORE						
Less than 650	1	0.1%	0	0.0%	1	100.0%
650-699	0	---	0	---	0	---
700-749	0	---	0	---	0	---
750-799	9	0.6%	7	77.8%	2	22.2%
800-849	60	4.3%	36	60.0%	24	40.0%
850-899	162	11.5%	102	63.0%	60	37.0%
900-949	263	18.7%	164	62.4%	99	37.6%
950-999	225	16.0%	145	64.4%	80	35.6%
1000-1099	414	29.4%	279	67.4%	135	32.6%
1100-1199	190	13.5%	132	69.5%	58	30.5%
1200 and above	83	5.9%	68	81.9%	15	18.1%
No SAT Score Reported	677	---	463	68.4%	214	31.6%
Total	2,084	100.0%	1,396	67.0%	688	33.0%
ACT TOTAL SCORE						
16-17	44	6.6%	30	68.2%	14	31.8%
18-19	166	24.7%	112	67.5%	54	32.5%
20-21	170	25.3%	116	68.2%	54	31.8%
22-23	115	17.1%	76	66.1%	39	33.9%
24-25	84	12.5%	54	64.3%	30	35.7%
26-27	57	8.5%	43	75.4%	14	24.6%
28-29	26	3.9%	22	84.6%	4	15.4%
30-32	9	1.3%	7	77.8%	2	22.2%
33 and above	0	---	0	---	0	---
No ACT Score Reported	1,413	---	936	66.2%	477	33.8%
Total	2,084	100.0%	1,396	67.0%	688	33.0%

**FIRST-TIME FULL-TIME FRESHMEN
COMPARISON OF CONTINUING AND NON-CONTINUING
FALL 2013 - FALL 2014**

	FRESHMEN		CONTINUING		NON-CONTINUING	
	Number	Percent	Number	Percent	Number	Percent
HIGH SCHOOL RANK						
Top 10%	167	10.0%	139	83.2%	28	16.8%
11-20%	235	14.0%	175	74.5%	60	25.5%
21-30%	266	15.9%	190	71.4%	76	28.6%
31-40%	246	14.7%	158	64.2%	88	35.8%
41-50%	225	13.4%	152	67.6%	73	32.4%
51-60%	193	11.5%	131	67.9%	62	32.1%
61-70%	177	10.5%	93	52.5%	84	47.5%
71-80%	101	6.0%	52	51.5%	49	48.5%
81-90%	52	3.1%	20	38.5%	32	61.5%
Bottom 10%	14	0.8%	7	50.0%	7	50.0%
GED	2	0.1%	0	0.0%	2	100.0%
No High School Rank Reported	406	---	279	68.7%	127	31.3%
Total	2,084	100.0%	1,396	67.0%	688	33.0%
HIGH SCHOOL GPA						
0.000	0	---	0	---	0	---
0.01 - 1.50	0	---	0	---	0	---
1.51 - 1.99	1	0.0%	0	0.0%	1	100.0%
2.00 - 2.49	82	4.0%	39	47.6%	43	52.4%
2.50 - 2.99	415	20.1%	217	52.3%	198	47.7%
3.00 - 3.49	694	33.6%	487	70.2%	207	29.8%
3.50 - 4.00	584	28.3%	408	69.9%	176	30.1%
Higher than 4.00	287	13.9%	234	81.5%	53	18.5%
No High School GPA Reported	21	---	11	52.4%	10	47.6%
Total	2,084	100.0%	1,396	67.0%	688	33.0%
FIRST-SEMESTER GPA (End of Fall 2013)						
0.000	51	2.5%	2	3.9%	49	96.1%
0.01 - 1.50	134	6.5%	24	17.9%	110	82.1%
1.51 - 1.99	122	5.9%	57	46.7%	65	53.3%
2.00 - 2.49	207	10.1%	125	60.4%	82	39.6%
2.50 - 2.99	355	17.3%	267	75.2%	88	24.8%
3.00 - 3.49	504	24.6%	396	78.6%	108	21.4%
3.50 - 4.00	679	33.1%	522	76.9%	157	23.1%
WITHDREW	32	---	3	9.4%	29	90.6%
Total	2,084	100.0%	1,396	67.0%	688	33.0%
FIRST-YEAR CUMMULATIVE GPA (End of Spring 2014)						
0.000	13	0.7%	0	0.0%	13	100.0%
0.01 - 1.50	115	6.4%	4	3.5%	111	96.5%
1.51 - 1.99	121	6.8%	75	62.0%	46	38.0%
2.00 - 2.49	218	12.2%	169	77.5%	49	22.5%
2.50 - 2.99	372	20.8%	317	85.2%	55	14.8%
3.00 - 3.49	478	26.7%	408	85.4%	70	14.6%
3.50 - 4.00	472	26.4%	402	85.2%	70	14.8%
WITHDREW	295	---	21	7.1%	274	92.9%
Total	2,084	100.0%	1,396	67.0%	688	33.0%

**FIRST-TIME FULL-TIME FRESHMEN
COMPARISON OF CONTINUING AND NON-CONTINUING
FALL 2013 - FALL 2014**

	FRESHMEN		CONTINUING		NON-CONTINUING	
	Number	Percent	Number	Percent	Number	Percent
MAJOR						
BUSINESS						
Accounting	60	15.2%	43	71.7%	17	28.3%
Economics (BA)	0	---	0	---	0	---
Economics (BS)	7	4.3%	6	85.7%	1	14.3%
Finance	43	10.9%	27	62.8%	16	37.2%
Management	164	41.5%	114	69.5%	50	30.5%
Marketing	86	21.8%	62	72.1%	24	27.9%
Resort Tourism Management	35	8.9%	23	65.7%	12	34.3%
Total	395	19.0%	275	69.6%	120	30.4%
EDUCATION						
Early Childhood Education	50	31.8%	25	50.0%	25	50.0%
Elementary Education	42	26.8%	28	66.7%	14	33.3%
Middle Level Education	30	19.1%	23	76.7%	7	23.3%
Physical Education	15	9.6%	11	73.3%	4	26.7%
Special Education	20	12.7%	13	65.0%	7	35.0%
Total	157	7.5%	100	63.7%	57	36.3%
HUMANITIES AND FINE ARTS						
Art Studio	18	5.7%	14	77.8%	4	22.2%
Communication	67	21.3%	50	74.6%	17	25.4%
English	14	4.5%	9	64.3%	5	35.7%
Graphic Design	42	13.4%	29	69.0%	13	31.0%
History	17	5.4%	12	70.6%	5	29.4%
Intelligence and National Security Studies	65	20.7%	43	66.2%	22	33.8%
Music	20	6.4%	15	75.0%	5	25.0%
Musical Theatre	12	3.8%	12	100.0%	0	0.0%
Philosophy	1	0.3%	0	0.0%	1	100.0%
Political Science	31	9.9%	23	74.2%	8	25.8%
Spanish	1	0.3%	1	100.0%	0	0.0%
Theatre	12	3.8%	7	58.3%	5	41.7%
Theatre Arts	14	4.5%	13	92.9%	1	7.1%
Total	314	15.1%	228	72.6%	86	27.4%
SCIENCE						
Biochemistry	33	3.3%	20	60.6%	13	39.4%
Biology	131	13.1%	79	60.3%	52	39.7%
Chemistry	26	2.6%	17	65.4%	9	34.6%
Computer Science	55	5.5%	39	70.9%	16	29.1%
Exercise and Sport Science	161	16.1%	111	68.9%	50	31.1%
Health Promotion	41	4.1%	25	61.0%	16	39.0%
Information Systems	20	2.0%	15	75.0%	5	25.0%
Marine Science	311	31.1%	213	68.5%	98	31.5%
Mathematics	20	2.0%	19	95.0%	1	5.0%
Physics	8	0.8%	4	50.0%	4	50.0%
Psychology	111	11.1%	72	64.9%	39	35.1%
Recreation and Sport Management	53	5.3%	33	62.3%	20	37.7%
Sociology	29	2.9%	19	65.5%	10	34.5%
Total	999	47.9%	666	66.7%	333	33.3%
UNIVERSITY						
Interdisciplinary Studies	1	0.5%	1	100.0%	0	0.0%
Undeclared	218	99.5%	126	57.8%	92	42.2%
Total	219	10.5%	127	58.0%	92	42.0%
GRAND TOTAL	2,084		1,396	67.0%	688	33.0%

**Profile of Coastal Carolina University's
First-Time Full-Time Freshmen**

	Fall 2013 FRESHMEN		Fall 2014 FRESHMEN	
	Number	Percent	Number	Percent
ETHNICITY				
Hispanic/Latino	84	4.0%	98	4.1%
RACE				
American Indian/Alaskan Native	11	0.5%	10	0.4%
Asian	13	0.6%	15	0.6%
Black/African American	419	20.1%	429	18.1%
Native Hawaiian/Pacific Islander	3	0.1%	1	0.0%
White	1,422	68.2%	1,677	70.6%
Two or More Races	108	5.2%	125	5.3%
Non-Resident Alien	15	0.7%	14	0.6%
Unknown	9	0.4%	5	0.2%
Total	2,084	100.0%	2,374	100.0%
GENDER				
Male	945	45.3%	1,069	45.0%
Female	1,139	54.7%	1,305	55.0%
Total	2,084	100.0%	2,374	100.0%
AGE				
less than 20	2,049	98.3%	2,343	98.7%
20-22	28	1.3%	25	1.1%
23-24	3	0.1%	3	0.1%
25-29	2	0.1%	2	0.1%
30-39	1	0.0%	1	0.0%
40-49	0	0.0%	0	0.0%
50+	1	0.0%	0	0.0%
No Report	0	0.0%	0	0.0%
Total	2,084	100.0%	2,374	100.0%
GEOGRAPHIC LOCATION				
In-State	954	45.8%	969	40.8%
Out-of-State	1,110	53.3%	1,386	58.4%
International	20	1.0%	19	0.8%
Total	2,084	100.0%	2,374	100.0%
IN-STATE				
Five-County Service Area				
Dillon	9	0.4%	6	0.3%
Georgetown	30	1.4%	44	1.9%
Horry	288	13.8%	313	13.2%
Marion	12	0.6%	15	0.6%
Williamsburg	21	1.0%	7	0.3%
Total	360	17.3%	385	16.2%
Other SC Counties				
Charleston	61	2.9%	53	2.2%
Florence	33	1.6%	39	1.6%
Greenville	50	2.4%	44	1.9%
Lexington	31	1.5%	33	1.4%
York	43	2.1%	37	1.6%
Other	376	18.0%	378	15.9%
Total	594	28.5%	584	24.6%

	Fall 2013 FRESHMEN		Fall 2014 FRESHMEN	
	Number	Percent	Number	Percent
OUT-OF-STATE				
Connecticut	59	2.8%	89	3.7%
Illinois	28	1.3%	29	1.2%
Maryland	144	6.9%	162	6.8%
Massachusetts	71	3.4%	103	4.3%
New Jersey	148	7.1%	155	6.5%
New York	116	5.6%	169	7.1%
North Carolina	71	3.4%	97	4.1%
Ohio	36	1.7%	48	2.0%
Pennsylvania	108	5.2%	159	6.7%
Virginia	149	7.1%	147	6.2%
Other	180	8.6%	228	9.6%
International	20	1.0%	19	0.8%
Total	1,130	54.2%	1,405	59.2%
SAT TOTAL SCORE				
Less than 650	1	0.0%	0	0.0%
650-699	0	0.0%	2	0.1%
700-749	0	0.0%	7	0.3%
750-799	9	0.4%	13	0.5%
800-849	60	2.9%	68	2.9%
850-899	162	7.8%	195	8.2%
900-949	263	12.6%	257	10.8%
950-999	225	10.8%	233	9.8%
1000-1099	414	19.9%	437	18.4%
1100-1199	190	9.1%	196	8.3%
1200 and above	83	4.0%	101	4.3%
No Report	677	32.5%	865	36.4%
Total	2,084	100.0%	2,374	100.0%
ACT TOTAL SCORE				
Less than 16	0	0.0%	9	0.4%
16-17	44	2.1%	74	3.1%
18-19	166	8.0%	225	9.5%
20-21	170	8.2%	206	8.7%
22-23	115	5.5%	135	5.7%
24-25	84	4.0%	83	3.5%
26-27	57	2.7%	78	3.3%
28-29	26	1.2%	33	1.4%
30-32	9	0.4%	17	0.7%
33 and above	0	0.0%	1	0.0%
No Report	1,413	67.8%	1,513	63.7%
Total	2,084	100.0%	2,374	99.6%

HIGH SCHOOL RANK	Fall 2013 FRESHMEN		Fall 2014 FRESHMEN	
	Number	Percent	Number	Percent
Top 10%	167	8.0%	151	6.4%
11-20%	235	11.3%	255	10.7%
21-30%	266	12.8%	287	12.1%
31-40%	246	11.8%	266	11.2%
41-50%	225	10.8%	282	11.9%
51-60%	193	9.3%	218	9.2%
61-70%	177	8.5%	194	8.2%
71-80%	101	4.8%	120	5.1%
81-90%	52	2.5%	70	2.9%
Bottom 10%	14	0.7%	18	0.8%
GED	2	0.1%	4	0.2%
No Report	406	19.5%	509	21.4%
Total	2,084	100.0%	2,374	100.0%
HIGH SCHOOL GPA				
1.51 - 1.99	1	0.0%	1	0.0%
2.00 - 2.49	82	3.9%	119	5.0%
2.50 - 2.99	415	19.9%	473	19.9%
3.00 - 3.49	694	33.3%	772	32.5%
3.50 - 4.00	584	28.0%	663	27.9%
Higher than 4.00	287	13.8%	332	14.0%
No Report	21	1.0%	14	0.6%
Total	2,084	100.0%	2,374	100.0%

MAJOR	Fall 2013 FRESHMEN		Fall 2014 FRESHMEN	
	Number	Percent	Number	Percent
BUSINESS				
Accounting	60	2.9%	79	3.3%
Economics (BA)	0	0.0%	1	0.0%
Economics (BS)	7	0.3%	15	0.6%
Finance	43	2.1%	42	1.8%
Hospitality, Resort, and Tourism Management	35	1.7%	50	2.1%
Management	164	7.9%	196	8.3%
Marketing	86	4.1%	117	4.9%
Total	395	19.0%	500	21.1%
EDUCATION				
Early Childhood Education	50	2.4%	75	3.2%
Elementary Education	42	2.0%	31	1.3%
Middle Level Education	30	1.4%	37	1.6%
Physical Education	15	0.7%	14	0.6%
Special Education	20	1.0%	22	0.9%
Total	157	7.5%	179	7.5%
HUMANITIES AND FINE ARTS				
Art Studio	18	0.9%	16	0.7%
Communication	67	3.2%	84	3.5%
English	14	0.7%	16	0.7%
Graphic Design	42	2.0%	36	1.5%
History	17	0.8%	21	0.9%
Intelligence and National Security Studies	65	3.1%	69	2.9%
Music	20	1.0%	30	1.3%
Musical Theatre	12	0.6%	9	0.4%
Philosophy	1	0.0%	4	0.2%
Political Science	31	1.5%	38	1.6%
Spanish	1	0.0%	0	0.0%
Theatre	12	0.6%	8	0.3%
Theatre Arts	14	0.7%	11	0.5%
Total	314	15.1%	342	14.4%
SCIENCE				
Biochemistry	33	1.6%	36	1.5%
Biology	131	6.3%	164	6.9%
Chemistry	26	1.2%	17	0.7%
Computer Science	55	2.6%	59	2.5%
Exercise and Sport Science	161	7.7%	208	8.8%
Health Promotion	41	2.0%	40	1.7%
Information Systems	20	1.0%	12	0.5%
Information Technology	---	0.0%	5	0.2%
Marine Science	311	14.9%	327	13.8%
Mathematics	20	1.0%	14	0.6%
Nursing	0	0.0%	0	0.0%
Physics	8	0.4%	29	1.2%
Psychology	111	5.3%	106	4.5%
Recreation and Sport Management	53	2.5%	61	2.6%
Sociology	29	1.4%	21	0.9%
Total	999	47.9%	1,099	46.3%
UNIVERSITY				
Interdisciplinary Studies	1	0.0%	0	0.0%
Undeclared	218	10.5%	254	10.7%
Total	219	10.5%	254	10.7%
GRAND TOTAL	2,084	100.0%	2,374	100.0%

FIRST-TIME TRANSFER STUDENTS

TABLE OF CONTENTS

First-time Transfer Students Highlights.....	35
Migration of Transfer Students to Coastal Carolina University.....	37
Migration of Transfer Students from Coastal Carolina University.....	38
New Transfer Student Retention.....	39
First-time Full-time Transfer Students One-Year Retention.....	40
Profile of First-time Full-time Transfer Students.....	43

FIRST-TIME TRANSFER STUDENTS HIGHLIGHTS

Fact Book, 2014

First-Time Full-Time Transfers - Fall 2014

- In Fall 2014, there were 764 newly enrolled first-time full-time transfer students, representing an increase of 10% from Fall 2013 (697).
- The most prominent ethnic groups among the Fall 2014 first-time full-time transfer students were White (69%), Black/African American (16%), and Two or More Races (6%).
- Female students comprised 53% of first-time full-time transfer students.
- First-time full-time transfer students consisted mostly of students between the ages of 20 and 22 (57%) and less than 20 years of age (19%).
- In Fall 2014, more in-state transfer students enrolled (51%) than out-of-state students (47%). International students comprised 2% of the non-in-state transfer students.
- In Fall 2014, 30% of first-time full-time transfer students originated from the immediate five-county service area of Dillon, Georgetown, Horry, Marion, and Williamsburg counties. Approximately 21% originated from other South Carolina counties.
- Of the 764 first-time full-time transfer students in Fall 2014, 74% transferred 30 credit hours or more.
- Approximately 2% of first-time full-time transfer students had not declared a major in Fall 2014. The five most popular majors for transfer students were: Management (10%), Exercise and Sport Science (8%), Communication (6%), Marine Science (6%), and Psychology (6%).

Migration and retention trends of 2013 first-time transfer students

- The number of students (779) who transferred to the University in 2013 decreased by 3% from 2012. Transfer students who came from other South Carolina higher education institutions comprised approximately 50% of the total transfer student population in 2013. The majority of the in-state transfer students (48%) were previously enrolled at Horry Georgetown Technical College.

- The first-year student retention rate for 2013 transfer students was 74%, representing an increase of 1% from the 2012 rate.
- There were a total of 697 first-time full-time transfer students enrolled at the University in Fall 2013. Of the 2013 transfer student cohort, 505 students chose to continue their studies at the University the following year. The one-year retention rate for the Fall 2013 cohort is 74% which is higher than the one-year retention for the Fall 2012 cohort (73%).
- In geographic origin, 264 (52%) continuing students were native to South Carolina and 241 (48%) students were from other U.S. states or international countries.
- Among the academic colleges, the continuation of first-time full-time transfer students from Fall 2013 to Fall 2014 was: Wall College of Business Administration (78%), Spadoni College of Education (80%), Edwards College of Humanities and Fine Arts (75%), College of Science (68%), and University College (56%).

The *First-Time Transfer Students* section is in alignment with the following supporting key strategies and goals from the *Coastal Carolina University Strategic Plan*:

Strategy 1: Meeting the Educational Needs of Students and Community

Expand degree and non-degree program offerings and formats while maintaining quality in all programs.

Goal 1.2. Appropriate Educational Initiatives: Promote high quality educational programs and services that are aligned with available resources to meet the needs of our constituencies.

Goal 1.5. Mutually-Beneficial Community Partnerships: Enhance and expand connections between the community and University programs and services to support enrollment, academic, cultural, and athletic outcomes that further the mission of Coastal Carolina University.

Strategy 2: Ensuring Student Success

Increase retention and graduation rates by supporting programs and services that enrich the student learning and living environment and broaden the diversity of students seeking Coastal Carolina University as their choice for educational advancement.

Goal 2.1. Talented and Diverse Student Body: Implement a comprehensive enrollment strategy to recruit and retain an academically talented and diverse student body.

**MIGRATION OF TRANSFER STUDENTS
TO
COASTAL CAROLINA UNIVERSITY
FALL SEMESTERS 2009-2013**

SC Transfers From:	2009	2010	2011	2012	2013
The Citadel	2	2	0	2	0
Clemson University	6	3	3	5	5
College of Charleston	13	17	6	6	15
Francis Marion University	6	7	9	13	8
Lander University	1	4	5	2	2
S.C. State University	5	6	9	5	12
USC-Columbia	28	25	32	25	28
USC-Aiken	0	0	0	0	0
USC-Beaufort	0	0	0	0	0
USC-Upstate	1	0	0	0	0
Winthrop University	8	5	9	3	3
Medical University of South Carolina	0	0	0	0	0
Two-year USC Campuses	3	0	0	0	0
Horry Georgetown Technical College	178	207	188	221	189
Other SC Technical Colleges	63	59	68	87	89
Private Senior Institutions	35	52	32	33	32
Private Two-year Colleges	3	3	3	8	8
Other Institutions	0	0	0	2	1
Total SC Transfers	352	390	364	412	392
Out-of-State Colleges	393	447	413	388	387
Foreign Colleges	9	3	2	1	0
Total Transfers	754	840	779	801	779

Source: SC Commission on Higher Education

**MIGRATION OF TRANSFER STUDENTS
FROM
COASTAL CAROLINA UNIVERSITY
FALL SEMESTERS 2009-2013**

SC Transfers To:	2009	2010	2011	2012	2013
The Citadel	1	0	1	0	1
Clemson University	19	17	21	13	10
College of Charleston	18	16	14	14	17
Francis Marion University	10	17	9	12	9
Lander University	0	2	2	1	1
S.C. State University	0	1	2	3	5
USC-Columbia	35	26	34	44	45
USC-Aiken	5	2	1	5	2
USC-Beaufort	2	2	1	2	0
USC-Upstate	3	12	7	5	1
Winthrop University	1	5	6	7	7
Medical University of South Carolina	2	0	1	2	1
Two-year USC Campuses	3	4	3	8	2
Horry Georgetown Technical College	82	99	79	118	118
Other SC Technical Colleges	81	74	83	96	88
Private Senior Institutions	6	8	9	11	14
Private Two-year Colleges	0	0	2	0	1
Total SC Transfers	268	285	275	341	322

Source: SC Commission on Higher Education

**NEW TRANSFER STUDENT RETENTION
FALL SEMESTERS 2008-2014**

Summary

	2008	2009	2010	2011	2012	2013	2014
# NEW FULL-TIME TRANSFER STUDENTS	669	690	777	714	721	697	764
AFTER 1ST YEAR							
Graduated	6 0.9%	16 2.3%	4 0.5%	7 1.0%	6 0.8%	8 1.1%	
Returned	490 73.2%	464 67.2%	557 71.7%	499 69.9%	519 72.0%	505 72.5%	
Total Retention	496 74.1%	480 69.6%	561 72.2%	506 70.9%	525 72.8%	513 73.6%	
AFTER 2ND YEAR							
Graduated	72 10.8%	82 11.9%	95 12.2%	104 14.6%	107 14.8%		
Returned	381 57.0%	354 51.3%	398 51.2%	346 48.5%	356 49.4%		
Total Retention	453 67.7%	436 63.2%	493 63.4%	450 63.0%	463 64.2%		
AFTER 3RD YEAR							
Graduated	253 37.8%	245 35.5%	289 37.2%	284 39.8%			
Returned	172 25.7%	151 21.9%	179 23.0%	130 18.2%			
Total Retention	425 63.5%	396 57.4%	468 60.2%	414 58.0%			
AFTER 4TH YEAR							
Graduated	378 56.5%	343 49.7%	423 54.4%				
Returned	34 5.1%	43 6.2%	46 5.9%				
Total Retention	412 61.6%	386 55.9%	469 60.4%				
AFTER 5TH YEAR							
Graduated	408 61.0%	375 54.3%					
Returned	9 1.3%	18 2.6%					
Total Retention	417 62.3%	393 57.0%					
AFTER 6TH YEAR							
Graduated	414 61.9%						
Returned	3 0.4%						
Total Retention	417 62.3%						

Cohort	%
2004	58.0%
2005	57.2%
2006	61.6%
2007	62.2%
2008	61.9%

**FIRST-TIME FULL-TIME TRANSFER
COMPARISON OF CONTINUING AND NON-CONTINUING
FALL 2013 - FALL 2014**

	TRANSFER		CONTINUING		NON-CONTINUING	
	Number	Percent	Number	Percent	Number	Percent
ETHNICITY						
Hispanic/Latino	23	3.4%	12	52.2%	11	47.8%
RACE						
American Indian/Alaskan Native	4	0.6%	4	100.0%	0	0.0%
Asian	2	0.3%	2	100.0%	0	0.0%
Black/African American	135	19.9%	96	71.1%	39	28.9%
Native Hawaiian/Pacific Islander	0	0.0%	0	---	0	---
White	477	70.1%	352	73.8%	125	26.2%
Two or More Races	24	3.5%	18	75.0%	6	25.0%
Non-Resident Alien	15	2.2%	10	66.7%	5	33.3%
Unknown	17	---	11	64.7%	6	35.3%
Total	697	100.0%	505	72.5%	192	27.5%
GENDER						
Men	355	50.9%	253	71.3%	102	28.7%
Women	342	49.1%	252	73.7%	90	26.3%
Total	697	100.0%	505	72.5%	192	27.5%
AGE						
less than 20	146	20.9%	104	71.2%	42	28.8%
20-22	386	55.4%	283	73.3%	103	26.7%
23-24	55	7.9%	38	69.1%	17	30.9%
25-29	52	7.5%	37	71.2%	15	28.8%
30-39	34	4.9%	25	73.5%	9	26.5%
40-49	16	2.3%	13	81.3%	3	18.8%
50+	8	1.1%	5	62.5%	3	37.5%
No Report	0	---	0	---	0	---
Total	697	100.0%	505	72.5%	192	27.5%
GEOGRAPHIC LOCATION						
In-State	360	51.6%	264	73.3%	96	26.7%
Out-of-State	321	46.1%	231	72.0%	90	28.0%
International	16	2.3%	10	62.5%	6	37.5%
Total	697	100.0%	505	72.5%	192	27.5%
IN-STATE						
Five-County Service Area						
Dillon	1	0.1%	1	100.0%	0	0.0%
Georgetown	22	3.2%	17	77.3%	5	22.7%
Horry	177	25.4%	130	73.4%	47	26.6%
Marion	8	1.1%	7	87.5%	1	12.5%
Williamsburg	6	0.9%	5	83.3%	1	16.7%
Total	214	30.7%	160	74.8%	54	25.2%
Other SC Counties						
Charleston	12	1.7%	7	58.3%	5	41.7%
Florence	13	1.9%	10	76.9%	3	23.1%
Greenville	16	2.3%	14	87.5%	2	12.5%
Lexington	4	0.6%	2	50.0%	2	50.0%
York	11	1.6%	7	63.6%	4	36.4%
Other	90	12.9%	64	71.1%	26	28.9%
Total	146	20.9%	104	71.2%	42	28.8%

**FIRST-TIME FULL-TIME TRANSFER
COMPARISON OF CONTINUING AND NON-CONTINUING
FALL 2013 - FALL 2014**

	TRANSFER		CONTINUING		NON-CONTINUING	
	Number	Percent	Number	Percent	Number	Percent
OUT-OF-STATE						
Connecticut	16	2.3%	11	68.8%	5	31.3%
Illinois	5	0.7%	5	100.0%	0	0.0%
Maryland	39	5.6%	24	61.5%	15	38.5%
Massachusetts	12	1.7%	9	75.0%	3	25.0%
New Jersey	43	6.2%	31	72.1%	12	27.9%
New York	61	8.8%	50	82.0%	11	18.0%
North Carolina	32	4.6%	20	62.5%	12	37.5%
Ohio	12	1.7%	8	66.7%	4	33.3%
Pennsylvania	27	3.9%	21	77.8%	6	22.2%
Virginia	23	3.3%	17	73.9%	6	26.1%
Other	51	7.3%	35	68.6%	16	31.4%
International	16	2.3%	10	62.5%	6	37.5%
Total	337	48.4%	241	71.5%	96	28.5%
CUMULATIVE CREDIT HOURS TRANSFERRED TO CCU						
Less than 30 hours	186	26.7%	113	60.8%	73	39.2%
30 hours	21	3.0%	12	57.1%	9	42.9%
More than 30 hours	490	70.3%	380	77.6%	110	22.4%
TOTAL	697	100.0%	505	72.5%	192	27.5%

**FIRST-TIME FULL-TIME TRANSFER
COMPARISON OF CONTINUING AND NON-CONTINUING
FALL 2013 - FALL 2014**

	TRANSFER		CONTINUING		NON-CONTINUING	
	Number	Percent	Number	Percent	Number	Percent
MAJOR						
BUSINESS						
Accounting	26	3.7%	22	84.6%	4	15.4%
Economics (BA)	3	0.4%	3	100.0%	0	0.0%
Economics (BS)	6	0.9%	5	83.3%	1	16.7%
Finance	23	3.3%	17	73.9%	6	26.1%
Management	56	8.0%	43	76.8%	13	23.2%
Marketing	29	4.2%	22	75.9%	7	24.1%
Resort Tourism Management	20	2.9%	15	75.0%	5	25.0%
Total	163	23.4%	127	77.9%	36	22.1%
EDUCATION						
Early Childhood Education	28	4.0%	25	89.3%	3	10.7%
Elementary Education	21	3.0%	15	71.4%	6	28.6%
Middle Level Education	11	1.6%	9	81.8%	2	18.2%
Physical Education	12	1.7%	8	66.7%	4	33.3%
Special Education	11	1.6%	9	81.8%	2	18.2%
Total	83	11.9%	66	79.5%	17	20.5%
HUMANITIES & FINE ARTS						
Art Studio	5	0.7%	4	80.0%	1	20.0%
Communication	37	5.3%	28	75.7%	9	24.3%
English	11	1.6%	9	81.8%	2	18.2%
Graphic Design	13	1.9%	10	76.9%	3	23.1%
History	9	1.3%	9	100.0%	0	0.0%
Intelligence and National Security Studies	24	3.4%	19	79.2%	5	20.8%
Music	9	1.3%	6	66.7%	3	33.3%
Musical Theatre	2	0.3%	2	100.0%	0	0.0%
Philosophy	1	0.1%	0	0.0%	1	100.0%
Political Science	9	1.3%	4	44.4%	5	55.6%
Spanish	3	0.4%	2	66.7%	1	33.3%
Theatre	8	1.1%	6	75.0%	2	25.0%
Theatre Arts	1	0.1%	0	0.0%	1	100.0%
Total	132	17.6%	99	75.0%	33	25.0%
SCIENCE						
Biochemistry	6	0.9%	3	50.0%	3	50.0%
Biology	45	6.5%	26	57.8%	19	42.2%
Chemistry	6	0.9%	3	50.0%	3	50.0%
Computer Science	14	2.0%	10	71.4%	4	28.6%
Exercise and Sport Science	39	5.6%	27	69.2%	12	30.8%
Health Administration	4	0.6%	3	75.0%	1	25.0%
Health Promotion	10	1.4%	7	70.0%	3	30.0%
Information Systems	7	1.0%	5	71.4%	2	28.6%
Marine Science	59	8.5%	38	64.4%	21	35.6%
Mathematics	3	0.4%	2	66.7%	1	33.3%
Nursing	2	0.3%	2	100.0%	0	0.0%
Physics	1	0.1%	1	100.0%	0	0.0%
Psychology	34	4.9%	22	64.7%	12	35.3%
Recreation and Sport Management	34	4.9%	28	82.4%	6	17.6%
Sociology	21	3.0%	17	81.0%	4	19.0%
Total	285	40.0%	194	68.1%	91	31.9%
UNIVERSITY						
Interdisciplinary Studies	11	1.6%	5	45.5%	6	54.5%
Undeclared	23	3.3%	14	60.9%	9	39.1%
Total	34	4.9%	19	55.9%	15	44.1%
GRAND TOTAL	697		505		192	

**Profile of Coastal Carolina University's
First-Time Full-Time Transfers**

	Fall 2013 NEW TRANSFERS		Fall 2014 NEW TRANSFERS	
	Number	Percent	Number	Percent
ETHNICITY				
Hispanic/Latino	23	3.3%	29	3.8%
RACE				
American Indian/Alaskan Native	4	0.6%	4	0.5%
Asian	2	0.3%	8	1.0%
Black/African American	135	19.4%	123	16.1%
Native Hawaiian/Pacific Islander	0	0.0%	2	0.3%
White	477	68.4%	529	69.2%
Two or More Races	24	3.4%	43	5.6%
Non-Resident Alien	15	2.2%	17	2.2%
Unknown	17	2.4%	9	1.2%
Total	697	100.0%	764	100.0%
GENDER				
Male	355	50.9%	359	47.0%
Female	342	49.1%	405	53.0%
Total	697	100.0%	764	100.0%
AGE				
less than 20	146	20.9%	145	19.0%
20-22	386	55.4%	437	57.2%
23-24	55	7.9%	67	8.8%
25-29	52	7.5%	52	6.8%
30-39	34	4.9%	35	4.6%
40-49	16	2.3%	24	3.1%
50+	8	1.1%	4	0.5%
No Report	0	0.0%	0	0.0%
Total	697	100.0%	764	100.0%
GEOGRAPHIC LOCATION				
In-State	360	51.6%	387	50.7%
Out-of-State	321	46.1%	359	47.0%
International	16	2.3%	18	2.4%
Total	697	100.0%	764	100.0%
IN-STATE				
Five-County Service Area				
Dillon	1	0.1%	2	0.3%
Georgetown	22	3.2%	31	4.1%
Horry	177	25.4%	194	25.4%
Marion	8	1.1%	3	0.4%
Williamsburg	6	0.9%	0	0.0%
Total	214	30.7%	230	30.1%
Other SC Counties				
Charleston	12	1.7%	15	2.0%
Florence	13	1.9%	10	1.3%
Greenville	16	2.3%	9	1.2%
Lexington	4	0.6%	7	0.9%
York	11	1.6%	19	2.5%
Other	90	12.9%	97	12.7%
Total	146	20.9%	157	20.5%

	Fall 2013		Fall 2014	
	Number	Percent	Number	Percent
OUT-OF-STATE				
Connecticut	16	2.3%	22	2.9%
Illinois	5	0.7%	6	0.8%
Maryland	39	5.6%	35	4.6%
Massachusetts	12	1.7%	18	2.4%
New Jersey	43	6.2%	61	8.0%
New York	61	8.8%	54	7.1%
North Carolina	32	4.6%	26	3.4%
Ohio	12	1.7%	14	1.8%
Pennsylvania	27	3.9%	36	4.7%
Virginia	23	3.3%	27	3.5%
Other	51	7.3%	60	7.9%
International	16	2.3%	18	2.4%
Total	337	48.4%	377	49.3%

CUMULATIVE CREDIT HOURS TRANSFERRED TO CCU

Less than 30 hours	186	26.7%	199	26.0%
30 hours	21	3.0%	21	2.7%
More than 30 hours	490	70.3%	544	71.2%
Total	697	100.0%	764	100.0%

	Fall 2013		Fall 2014	
	Number	Percent	Number	Percent
MAJOR BUSINESS				
Accounting	26	3.7%	27	3.5%
Economics (BA)	3	0.4%	0	0.0%
Economics (BS)	6	0.9%	4	0.5%
Finance	23	3.3%	16	2.1%
Hospitality, Resort, and Tourism Management	20	2.9%	23	3.0%
Management	56	8.0%	79	10.3%
Marketing	29	4.2%	39	5.1%
Total	163	23.4%	188	24.6%
EDUCATION				
Early Childhood Education	28	4.0%	27	3.5%
Elementary Education	21	3.0%	22	2.9%
Middle Level Education	11	1.6%	10	1.3%
Physical Education	12	1.7%	13	1.7%
Special Education	11	1.6%	8	1.0%
Total	83	11.9%	80	10.5%
HUMANITIES & FINE ARTS				
Art Studio	5	0.7%	6	0.8%
Communication	37	5.3%	49	6.4%
English	11	1.6%	11	1.4%
Graphic Design	13	1.9%	16	2.1%
History	9	1.3%	9	1.2%
Intelligence and National Security Studies	24	3.4%	28	3.7%
Music	9	1.3%	4	0.5%
Musical Theatre	2	0.3%	3	0.4%
Philosophy	1	0.1%	1	0.1%
Political Science	9	1.3%	19	2.5%
Spanish	3	0.4%	0	0.0%
Theatre	8	1.1%	1	0.1%
Theatre Arts	1	0.1%	3	0.4%
Total	132	18.9%	150	19.6%
SCIENCE				
Biochemistry	6	0.9%	7	0.9%
Biology	45	6.5%	44	5.8%
Chemistry	6	0.9%	4	0.5%
Computer Science	14	2.0%	22	2.9%
Exercise and Sport Science	39	5.6%	57	7.5%
Health Administration	4	0.6%	2	0.3%
Health Promotion	10	1.4%	17	2.2%
Information Systems	7	1.0%	3	0.4%
Information Technology	---	0.0%	1	0.1%
Marine Science	59	8.5%	48	6.3%
Mathematics	3	0.4%	4	0.5%
Nursing	2	0.3%	1	0.1%
Physics	1	0.1%	5	0.7%
Psychology	34	4.9%	48	6.3%
Recreation and Sport Management	34	4.9%	36	4.7%
Sociology	21	3.0%	22	2.9%
Total	285	40.9%	321	42.0%
UNIVERSITY				
Interdisciplinary Studies	11	1.6%	11	1.4%
Undeclared	23	3.3%	14	1.8%
Total	34	4.9%	25	3.3%
GRAND TOTAL	697	100.0%	764	100.0%

ACADEMICS

TABLE OF CONTENTS

Academic Highlights	49
Undergraduate Major by Class	51
Undergraduate Enrollment by Major	52
Graduate Enrollment by Major	53
Undergraduate Major by Average Age.....	54
Average Size of Lecture Classes by Discipline and Level	55
Average Grade Point Ratio by Class	56
Grade Distribution by Discipline, Fall 2014	58
Credit Hour and FTE Production by Discipline, Fall 2013	60
Credit Hour and FTE Production by Discipline, Fall 2014	61
Trends in Student/Faculty Ratio.....	62
Total Undergraduate Degrees Awarded by Major.....	63
Total Graduate Degrees Awarded by Major and/or Discipline	64
Total Degrees Awarded	65

ACADEMIC HIGHLIGHTS

Fact Book, 2014

Undergraduate Major by Class

In Fall 2014, there were 9,364 undergraduates: 32% were freshmen, 23% were sophomores, 20% were juniors, 22% were seniors, and 3% were non-degree seeking students.

Enrollment By Major

Undergraduate: There was an 18% increase in undergraduate student enrollment between Fall 2009 and Fall 2014.

- Wall College of Business Administration: 3% decrease between Fall 2009 and Fall 2014.
- Spadoni College of Education: 8% decrease between Fall 2009 and Fall 2014. The enrollment in Middle Level Education increased 81% and Special Education enrollment increased 45%.
- Edwards College of Humanities and Fine Arts: 27% increase between Fall 2009 and Fall 2014. The Communication major grew in enrollment 33%.
- College of Science: 45% increase between Fall 2009 and Fall 2014. The Exercise and Sport Science, Physics and Sociology majors continued to grow with increases in enrollment during the five year period at 155%, 114%, and 103%, respectively.

Graduate: There was a 71% increase in the number of degree-seeking graduate students between Fall 2009 and Fall 2014.

Average Size of Lecture Classes

In Fall 2014, the average size of lower- and upper-division lecture classes for the University was 26.8 and 22.3, respectively. During the last three years, the average size of lower-division lecture classes has decreased, and there has been an increase in the average size of upper-division lecture classes.

Total Degrees Awarded

In 2013-2014, 1,785 degrees were awarded. Since 1974, the University has awarded 26,258 degrees ranging from the associate to master levels. The Wall College of Business Administration awarded the highest number of degrees (6,992) between 1974 and 2014.

The *Academics* section is in alignment with the following supporting key strategies and goals from the *Coastal Carolina University Strategic Plan*:

Strategy 1: Meeting the Educational Needs of Students and Community

Expand degree and non-degree program offerings and formats while maintaining quality in all programs.

Goal 1.1. Quality Teaching and Learning: Promote a student-centered campus environment that strengthens opportunities for exceptional teaching and learning in undergraduate and graduate programs.

Goal 1.3. Improved Access to Education: Enhance accessibility of education at Coastal Carolina University while maintaining quality standards.

Strategy 2: Ensuring Student Success

Increase retention and graduation rates by supporting programs and services that enrich the student learning and living environment and broaden the diversity of students seeking Coastal Carolina University as their choice for educational advancement.

Goal 2.3. Supportive Learning and Living Facilities: Provide facilities and services that support a rich academic, residential, athletic, co-curricular, and sustainable environment in which students, faculty, and staff effectively interact.

**UNDERGRADUATE MAJOR BY CLASS
FALL 2014**

COLLEGE/MAJOR	Freshman	Sophomore 30 Hours Completed	Junior 60 Hours Completed	Senior 90 Hours Completed	Non- Degree Seeking	Total
BUSINESS ADMINISTRATION						
Accounting	93	57	62	65	0	277
Economics (BA)	1	0	2	5	0	8
Economics (BS)	17	4	7	19	0	47
Finance	60	42	43	55	0	200
Hospitality, Resort, and Tourism Management	72	61	42	43	0	218
Management	272	229	166	151	0	818
Marketing	158	104	90	90	0	442
EDUCATION						
Early Childhood Education	84	63	59	72	0	278
Elementary Education	39	43	49	65	0	196
Middle Level Education	45	31	30	33	0	139
Physical Education	22	17	13	16	0	68
Special Education	27	22	19	25	0	93
HUMANITIES AND FINE ARTS						
Art Studio	21	25	22	21	0	89
Communication	126	156	123	128	0	533
English	21	21	40	52	0	134
Graphic Design	48	39	38	57	0	182
History	30	27	49	37	0	143
Intelligence and National Security Studies	97	81	48	28	0	254
Music	33	19	25	12	0	89
Musical Theatre	11	11	7	12	0	41
Philosophy	4	1	4	5	0	14
Political Science	54	36	40	57	0	187
Spanish	0	2	2	4	0	8
Theatre	10	11	5	7	0	33
Theatre Arts	12	16	14	11	0	53
SCIENCE						
Biochemistry	35	22	24	20	0	101
Biology	198	91	87	94	0	470
Chemistry	20	8	6	14	0	48
Computer Science	73	58	36	26	0	193
Exercise and Sport Science	272	177	152	135	0	736
Health Administration	0	1	3	16	0	20
Health Promotion	51	69	64	53	0	237
Information Systems	18	20	25	48	0	111
Information Technology	4	6	5	1	0	16
Marine Science	371	197	160	151	0	879
Math	24	14	8	16	0	62
Nursing	0	0	11	67	0	78
Physics	31	15	6	8	0	60
Psychology	142	126	121	99	0	488
Recreation and Sport Management	93	90	86	72	0	341
Sociology	38	53	58	82	0	231
UNIVERSITY COLLEGE						
Interdisciplinary Studies	4	23	51	67	0	145
Undeclared	275	21	2	0	306	604
GRAND TOTAL	3,006	2,109	1,904	2,039	306	9,364

**UNDERGRADUATE ENROLLMENT BY MAJOR
FALL SEMESTERS 2009-2014**

COLLEGE/MAJOR	<u>2009</u>	<u>2010</u>	<u>2011</u>	<u>2012</u>	<u>2013</u>	<u>2014</u>	5-Year % Change
BUSINESS ADMINISTRATION							
Accounting	308	319	296	307	299	277	-10.1%
Economics (BA)	1	6	3	3	7	8	700.0%
Economics (BS)	65	65	62	49	43	47	-27.7%
Finance	216	172	196	173	191	200	-7.4%
Hospitality, Resort, and Tourism Management	203	217	218	216	199	218	7.4%
Management	810	761	734	700	730	818	1.0%
Marketing	459	435	411	405	389	442	-3.7%
TOTAL	2,062	1,975	1,920	1,853	1,858	2,010	-2.5%
EDUCATION							
Early Childhood Education	292	319	289	275	275	278	-4.8%
Elementary Education	255	254	235	223	216	196	-23.1%
Middle Level Education	77	96	128	132	124	139	80.5%
Physical Education	157	154	101	92	77	68	-56.7%
Special Education	64	88	99	95	90	93	45.3%
TOTAL	845	911	852	817	782	774	-8.4%
HUMANITIES AND FINE ARTS							
Art Studio	165	104	101	88	85	89	-46.1%
Communication	400	470	479	467	498	533	33.3%
English	150	156	158	146	140	134	-10.7%
Graphic Design	----	80	160	167	180	182	N/A
History	211	214	178	159	148	143	-32.2%
Intelligence and National Security Studies	----	----	----	41	158	254	N/A
Music	91	94	99	86	91	89	-2.2%
Musical Theatre	50	42	42	40	40	41	-18.0%
Philosophy	23	23	23	25	21	14	-39.1%
Political Science	225	223	233	215	190	187	-16.9%
Spanish	36	35	35	28	26	8	-77.8%
Theatre	38	46	54	47	49	33	-13.2%
Theatre Arts	----	16	31	39	45	53	N/A
TOTAL	1,389	1,503	1,593	1,548	1,671	1,760	26.7%
SCIENCE							
Biochemistry	----	11	59	80	80	101	N/A
Biology	564	598	560	545	486	470	-16.7%
Chemistry	51	52	35	41	53	48	-5.9%
Computer Science	202	214	182	179	173	193	-4.5%
Exercise and Sport Science*	289	389	550	616	640	736	154.7%
Health Administration	----	----	----	3	20	20	N/A
Health Promotion*	216	217	221	241	226	237	9.7%
Information Systems	----	10	43	92	120	111	N/A
Information Technology	----	----	----	----	----	16	N/A
Marine Science	566	628	708	813	831	879	55.3%
Math	76	87	76	66	61	62	-18.4%
Nursing	----	----	27	43	85	78	N/A
Physics	28	28	27	38	34	60	114.3%
Psychology	420	467	451	461	483	488	16.2%
Recreation and Sport Management*	284	312	323	328	326	341	20.1%
Sociology	114	162	205	235	227	231	102.6%
TOTAL	2,810	3,175	3,467	3,781	3,845	4,071	44.9%
UNIVERSITY COLLEGE							
Interdisciplinary Studies**	53	55	79	93	119	145	173.6%
Undeclared	385	355	386	374	295	298	-22.6%
Non-Degree Seeking	376	229	220	280	297	306	-18.6%
ENROLLMENT TOTAL	7,920	8,203	8,517	8,746	8,867	9,364	18.2%

*Major moved from the Spadoni College of Education to the College of Science July 1, 2009.

**Major moved from the Edwards College of Humanities and Fine Arts to University College July 1, 2009.

**GRADUATE ENROLLMENT BY MAJOR
FALL SEMESTERS 2009-2014**

COLLEGE/MAJOR	<u>2009</u>	<u>2010</u>	<u>2011</u>	<u>2012</u>	<u>2013</u>	<u>2014</u>	<u>5-Year % Change</u>
BUSINESS ADMINISTRATION							
Master of Accountancy	---	---	20	30	27	30	N/A
Master of Business Administration	39	41	46	63	77	72	84.6%
Business Administration - Accounting*	14	15	8	---	---	---	N/A
TOTAL	53	56	74	93	104	102	92.5%
EDUCATION							
Master of Arts in Teaching:							
Art	7	7	7	5	4	8	14.3%
English	3	13	13	20	11	15	400.0%
Math	5	3	6	4	1	2	-60.0%
Music	10	2	7	5	5	8	-20.0%
Science	11	13	10	10	14	6	-45.5%
Social Studies	24	23	21	22	20	27	12.5%
Master of Education:							
Early Childhood Education*	23	6	---	---	---	---	N/A
Educational Leadership (M.Ed.)	79	103	133	121	109	114	N/A
Educational Leadership (Ed.S.)	---	---	---	---	---	10	N/A
Elementary Education*	25	8	---	---	---	---	N/A
Learning and Teaching:							
Early and Elementary Grades	---	7	5	4	0	0	N/A
Instructional Technology	---	17	28	29	81	102	N/A
Literacy	---	18	26	21	55	47	N/A
Special Education	---	---	---	---	0	0	N/A
Secondary Education*:							
English	6	3	1	---	---	---	N/A
Math	4	2	0	---	---	---	N/A
Music	0	0	0	---	---	---	N/A
Science	4	2	0	---	---	---	N/A
Social Studies	3	4	0	---	---	---	N/A
Online Teaching and Training (Certificate)	---	---	---	---	---	1	N/A
TOTAL	204	231	257	241	300	340	66.7%
HUMANITIES AND FINE ARTS							
Master of Arts in Liberal Studies	---	---	---	---	---	11	N/A
Master of Arts in Writing	---	10	20	28	21	19	N/A
TOTAL	0	10	20	28	21	30	N/A
SCIENCE							
Master of Science in Coastal Marine and Wetland Studies	37	34	32	35	34	29	-21.6%
Ph.D. in Marine Science	---	---	---	---	---	2	N/A
Applied Computing and Information Systems (Certificate)	---	---	---	1	1	0	N/A
TOTAL	37	34	32	36	35	31	-16.2%
Degree Seeking	294	331	383	398	460	503	71.1%
Non-Degree Seeking	146	172	184	191	151	109	-25.3%
ENROLLMENT TOTAL	440	503	567	589	611	612	39.1%

*Program discontinued

**UNDERGRADUATE MAJOR BY AVERAGE AGE OF STUDENT
FALL SEMESTERS 2009-2014**

COLLEGE/MAJOR	2009	2010	2011	2012	2013	2014
BUSINESS ADMINISTRATION						
Accounting	22	22	22	22	23	22
Economics (BA)	21	22	23	22	23	25
Economics (BS)	21	22	22	21	23	22
Finance	22	22	22	21	21	21
Hospitality, Resort, and Tourism Management	20	20	20	20	20	20
Management	21	21	21	21	21	21
Marketing	21	21	21	21	21	20
College Average Age	21	21	21	21	21	21
EDUCATION						
Early Childhood Education	22	22	22	22	22	21
Elementary Education	22	22	22	22	22	22
Middle Level Education	23	22	23	23	22	22
Physical Education	21	21	21	21	21	21
Special Education	22	23	22	21	21	22
College Average Age	22	22	22	22	22	22
HUMANITIES AND FINE ARTS						
Art Studio	21	21	21	22	22	23
Communication	21	21	21	21	21	21
English	23	22	22	23	23	23
Graphic Design	----	21	21	21	21	22
History	22	22	24	23	23	23
Intelligence and National Security Studies	----	----	----	20	20	21
Music	21	22	22	22	22	20
Musical Theatre	20	20	20	20	20	20
Philosophy	24	22	25	26	26	27
Political Science	23	23	23	22	22	21
Spanish	24	24	23	24	25	28
Theatre	20	20	20	20	21	21
Theatre Arts	----	19	19	20	20	20
College Average Age	22	22	22	22	22	21
SCIENCE						
Biochemistry	----	21	20	19	20	21
Biology	21	21	21	21	21	20
Chemistry	21	20	21	21	21	21
Computer Science	22	22	21	21	21	21
Exercise and Sport Science*	20	20	20	20	20	20
Health Administration	----	----	----	29	32	36
Health Promotion*	22	22	22	22	22	22
Information Systems	----	23	23	21	22	23
Information Technology	----	----	----	----	----	21
Marine Science	20	20	20	20	20	20
Math	21	21	21	22	21	21
Nursing	----	----	38	35	36	38
Physics	20	21	21	20	21	21
Psychology	22	21	21	21	21	21
Recreation and Sport Management*	21	21	21	21	21	21
Sociology	24	24	24	24	23	23
College Average Age	21	21	21	21	21	21
UNIVERSITY COLLEGE						
Interdisciplinary Studies**	33	30	27	28	28	26
Undeclared	19	19	19	19	19	19
Non-Degree Seeking	22	21	19	19	18	20
College Average Age	21	21	20	20	20	21
Coastal Average Age	21	21	21	21	21	21

*Major moved from the Spadoni College of Education to the College of Science July 1, 2009.

**Major moved from the Edwards College of Humanities and Fine Arts to University College July 1, 2009.

**AVERAGE SIZE OF LECTURE CLASSES
BY DISCIPLINE AND LEVEL
FALL SEMESTERS 2012-2014**

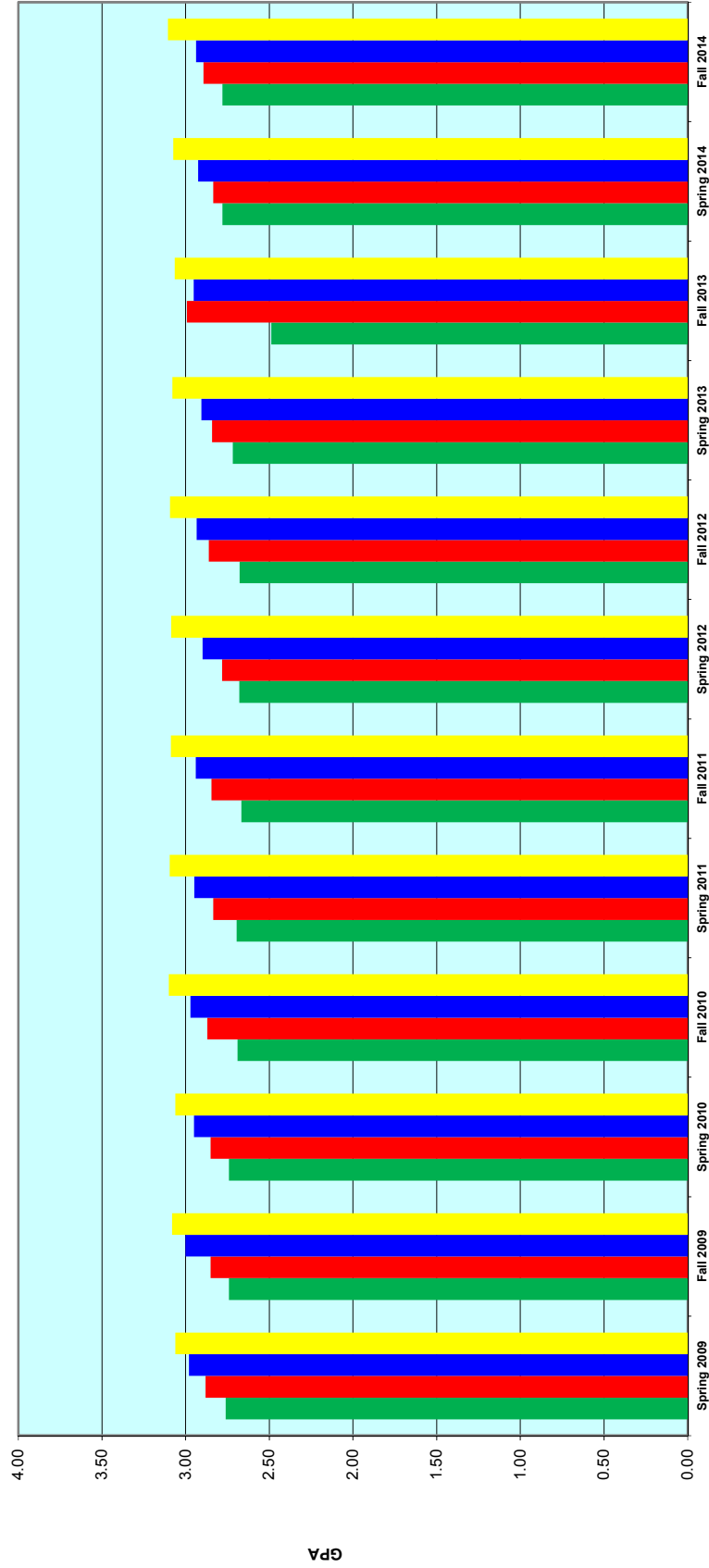
COLLEGE/MAJOR	2012		2013		2014	
	Lower Div.	Upper Div.	Lower Div.	Upper Div.	Lower Div.	Upper Div.
BUSINESS ADMINISTRATION						
Business Administration	39.8	28.5	43.2	26.8	42.2	28.9
College Average	39.8	28.5	43.2	26.8	42.2	28.9
EDUCATION						
Physical Education	18.2	16.5	15.6	12.2	16.6	12.0
Teacher Education	23.6	17.4	23.1	17.2	20.7	20.6
College Average	20.9	17.0	19.4	14.7	18.7	16.3
HUMANITIES AND FINE ARTS						
Art	23.2	11.0	21.3	13.9	21.3	14.6
English	21.9	21.6	20.1	19.9	21.6	21.0
Foreign Languages	21.3	8.4	20.0	13.7	20.5	13.0
Geography	39.1	12.0	29.3	0.0	31.3	13.0
Graphic Design	15.8	9.2	20.0	13.5	13.0	15.3
History	36.4	15.9	29.6	19.7	32.4	19.4
Music	23.7	10.1	25.2	11.7	23.1	11.7
Philosophy/Religion	24.0	21.9	24.1	21.1	23.9	22.0
Political Science	29.5	17.9	28.6	18.3	31.6	21.3
Theatre	22.7	12.2	21.3	14.1	23.1	13.8
College Average	25.8	14.0	24.0	14.6	24.2	16.5
SCIENCE						
Biology	51.0	25.4	45.4	28.8	46.0	28.1
Chemistry	36.1	16.0	33.7	16.5	35.2	19.2
Computer Science	21.8	13.3	22.9	19.3	22.0	18.1
Exercise and Sport Science	31.5	23.4	30.6	22.4	31.1	22.3
Health Promotion	31.0	24.7	27.5	19.7	28.2	19.1
Math	31.3	11.1	29.5	13.0	29.2	12.5
Marine Science	37.5	31.0	38.4	33.2	37.7	30.9
Nursing	0.0	14.2	0.0	19.3	0.0	17.9
Physics	30.8	6.7	30.3	7.3	36.9	6.0
Psychology	34.7	32.9	29.7	29.6	33.3	31.8
Recreation and Sport Management	30.3	28.0	27.9	26.2	31.9	24.4
Sociology	31.4	32.2	28.8	33.1	30.8	27.8
College Average	30.6	21.6	28.7	22.4	30.2	21.5
UNIVERSITY COLLEGE						
	30.9	5.1	24.9	6.0	23.9	10.7
University Average	27.4	21.3	26.9	21.3	26.8	22.3

**AVERAGE GRADE POINT RATIO
BY CLASS
2006-2014**

Semester	Freshman		Sophomore		Junior		Senior		Total	
	Sem.	Cum.	Sem.	Cum.	Sem.	Cum.	Sem.	Cum.	Sem.	Cum.
Spring 2006	2.67	2.73	2.75	2.80	2.91	2.93	3.09	3.03	2.86	2.87
Fall 2006	2.80	2.82	2.77	2.85	2.92	2.95	3.10	3.05	2.89	2.91
Spring 2007	2.72	2.83	2.78	2.84	2.91	2.92	3.04	3.01	2.87	2.90
Fall 2007	2.79	2.80	2.82	2.89	2.97	2.97	3.05	3.02	2.89	2.90
Spring 2008	2.74	2.82	2.77	2.86	2.96	2.94	3.10	3.01	2.89	2.91
Fall 2008	2.66	2.69	2.81	2.90	2.95	2.96	3.08	3.06	2.85	2.89
Spring 2009	2.68	2.76	2.78	2.88	2.96	2.98	3.13	3.06	2.89	2.92
Fall 2009	2.72	2.74	2.78	2.85	2.95	3.00	3.09	3.08	2.87	2.90
Spring 2010	2.64	2.74	2.77	2.85	2.89	2.95	3.05	3.06	2.84	2.91
Fall 2010	2.65	2.69	2.74	2.87	2.90	2.97	3.13	3.10	2.83	2.88
Spring 2011	2.57	2.69	2.71	2.83	2.87	2.95	3.12	3.09	2.82	2.90
Fall 2011	2.63	2.67	2.70	2.85	2.84	2.94	3.08	3.09	2.79	2.86
Spring 2012	2.56	2.68	2.65	2.78	2.81	2.90	3.09	3.09	2.78	2.86
Fall 2012	2.64	2.68	2.75	2.86	2.85	2.93	3.09	3.09	2.81	2.86
Spring 2013	2.63	2.72	2.74	2.84	2.84	2.91	3.12	3.08	2.83	2.89
Fall 2013	2.48	2.49	2.94	2.99	2.86	2.95	3.01	3.06	2.90	2.96
Spring 2014	2.63	2.78	2.69	2.83	2.83	2.93	3.15	3.07	2.83	2.91
Fall 2014	2.73	2.78	2.73	2.89	2.83	2.94	3.12	3.11	2.84	2.91

Note: Does not include non-degree seeking students.

AVERAGE CUMULATIVE GRADE POINT RATIO BY CLASS 2009-2014



Semesters

■ Freshman
 ■ Sophomore
 ■ Junior
 ■ Senior

**GRADE DISTRIBUTION BY DISCIPLINE
FALL 2014**

Discipline	A (4.0)	B+	B (3.0)	C+	C (2.0)	D+	D (1.0)	F (0.0)	S	U	W	WF	Total # Of Grades	Avg. GPA		
Accounting	44	18	44	18	38	12	10	13	0	0	0	0	31	0	228	2.64
Anthropology	92	26	47	14	24	5	3	6	0	0	4	0	4	0	221	3.20
Art Design	45	10	62	10	31	2	4	5	0	0	5	0	5	0	174	2.93
Art Education	24	3	4	3	2	1	0	2	0	0	0	0	0	0	39	3.37
Art History	95	29	174	37	126	10	51	55	0	0	38	0	38	0	615	2.45
Art Studio	279	79	172	38	59	6	15	34	0	0	60	0	60	0	742	3.15
Astronomy	48	12	30	13	38	8	18	31	0	0	8	0	8	0	206	2.34
Bioinformatics	11	2	6	1	5	0	3	9	0	0	0	0	0	0	37	2.28
Biology	924	397	629	281	364	74	123	175	0	0	236	1	236	1	3,204	2.91
Business Administration	985	310	785	205	425	52	108	161	0	0	232	3	232	3	3,266	2.94
Chemistry	189	85	234	90	234	51	114	113	0	0	192	1	192	1	1,303	2.38
Communication	495	172	320	98	140	17	36	60	0	0	47	0	47	0	1,385	3.09
Communication, Lang., & Cultures	1	0	1	1	2	0	0	0	0	0	1	0	1	0	6	2.70
Computer Science	606	103	219	56	130	25	61	139	0	0	91	2	91	2	1,432	2.94
Economics	249	111	178	72	204	9	78	87	0	0	72	4	72	4	1,064	2.62
Educ - Early Childhood	308	48	20	1	0	0	0	4	17	0	9	0	9	0	407	3.84
Educ - Elementary	202	28	24	5	5	0	0	1	15	0	5	0	5	0	285	3.78
Educ - Learning Disabilities	149	20	12	5	10	0	0	2	0	0	1	0	1	0	199	3.71
Educ - Middle Level	47	11	17	0	4	1	0	1	6	0	2	0	2	0	89	3.54
Education	359	51	75	27	28	4	10	33	0	0	35	1	35	1	623	3.37
English Composition	708	261	524	151	263	24	70	209	0	0	109	4	109	4	2,323	2.86
English Literature	427	165	273	73	87	9	33	58	0	0	77	0	77	0	1,202	3.12
Exercise and Sport Science	489	191	413	132	192	30	43	53	0	0	45	4	45	4	1,592	3.02
Finance	51	21	47	39	20	5	16	11	0	0	14	0	14	0	224	2.76
French	76	27	49	18	37	7	7	8	0	0	15	0	15	0	244	2.98
Geography	166	54	137	27	51	5	31	30	0	0	23	0	23	0	524	2.94
Geology	0	0	2	2	0	2	0	2	0	0	0	0	0	0	8	1.75
German	21	8	12	8	4	4	5	7	0	0	13	0	13	0	82	2.71
Golf Management	187	8	70	4	22	0	9	3	176	0	10	1	10	1	490	3.45
Health Administration	8	5	5	5	6	0	1	0	0	0	4	0	4	0	34	3.00
Health Promotion	316	171	281	91	150	21	49	60	12	0	54	0	54	0	1,205	2.91
History	525	253	615	201	360	64	129	178	0	0	210	7	210	7	2,542	2.69
Honors	105	7	10	3	1	0	2	2	0	0	0	0	0	0	130	3.74
Humanities and Fine Arts	8	0	0	0	0	0	0	1	0	0	0	0	0	0	9	3.56
Intelligence & Nat. Sec. Studies	25	10	72	7	26	2	8	3	0	0	5	0	5	0	158	2.82

GRADE DISTRIBUTION BY DISCIPLINE, FALL 2014 (CONTINUED)

Discipline	A (4.0)	B+ (3.5)	B (3.0)	C+ (2.5)	C (2.0)	D+ (1.5)	D (1.0)	F (0.0)	S	U	W	WF	Total # Of Grades	Avg. GPA
Interdisciplinary Studies	49 48%	14 14%	13 13%	8 8%	5 5%	0 0%	0 0%	8 8%	0 0%	0 0%	6 6	0 0	103	3.24
International	0 0%	0 0%	0 0%	0 0%	0 0%	0 0%	0 0%	0 0%	14 14	2 2	0 0	0 0	16	N/A
Italian	19 18%	6 6%	32 30%	16 15%	11 10%	3 3%	3 3%	7 7%	0 0	0 0	8 8	0 0	105	2.71
Journalism	201 32%	69 11%	179 28%	63 10%	49 8%	2 0%	11 2%	32 5%	0 0	0 0	27 0	0 0	633	3.06
Kinesiology, Rec. & Sport	12 20%	5 8%	17 29%	3 5%	7 12%	0 0%	4 7%	4 7%	0 0	0 0	7 0	0 0	59	2.73
Library	17 55%	3 10%	2 6%	3 10%	4 13%	0 0%	1 3%	1 3%	0 0	0 0	0 0	0 0	31	3.26
Management	130 35%	66 18%	88 24%	28 8%	34 9%	1 0%	6 2%	10 3%	0 0	0 0	10 0	0 0	373	3.20
Marine Science	436 23%	255 14%	448 24%	175 9%	261 14%	33 2%	63 3%	88 5%	0 0	0 0	103 1	1,863	2.87	
Marketing	68 28%	33 14%	74 31%	17 7%	33 14%	2 1%	4 2%	6 2%	0 0	0 0	5 0	0 0	242	3.06
Mathematics	323 10%	132 4%	422 13%	175 5%	444 13%	112 3%	254 8%	411 12%	307 96	629 4	3,309	2,09	2.09	
Music	503 42%	73 6%	150 12%	47 4%	118 10%	11 1%	38 3%	65 5%	108 24	74 1	1,212	3,11	3.11	
Music Commercial / Jazz	4 80%	0 0%	0 0%	0 0%	0 0%	0 0%	0 0%	0 0%	0 0	0 0	1 0	0 0	5	4.00
Music Education	49 51%	5 5%	15 16%	7 3%	5 5%	3 3%	1 1%	3 3%	0 0	0 0	10 0	0 0	96	3.33
Nursing	182 71%	42 16%	17 7%	7 3%	5 2%	0 0%	0 0%	2 1%	0 0	0 0	0 0	0 0	255	3.74
Philosophy	243 21%	123 11%	252 22%	145 13%	145 13%	38 3%	43 4%	62 5%	3 0	93 2	1,149	2,76	2.76	
Physical Education	77 60%	16 13%	22 17%	6 5%	1 1%	0 0%	0 0%	2 2%	1 0	3 0	128	3,60	3.60	
Physically Active Living Skills	684 81%	57 7%	37 4%	2 0%	6 1%	0 0%	2 0%	20 2%	0 0	0 0	38 0	846	3.79	
Physics	86 12%	86 12%	131 18%	119 16%	123 17%	53 7%	48 7%	54 7%	0 0	0 0	37 1	738	2.44	
Political Science	317 21%	107 7%	332 22%	127 8%	239 16%	46 3%	78 5%	116 8%	10 0	143 5	1,520	2,62	2.62	
Professional Development	0 0%	0 0%	0 0%	0 0%	0 0%	0 0%	0 0%	0 0%	602 97	16 1	716	0,00	0.00	
Psychology	518 28%	212 12%	422 23%	138 8%	251 14%	27 1%	74 4%	73 4%	0 0	100 6	1,821	2,93	2.93	
Recreation and Sport Management	176 20%	65 7%	289 32%	69 8%	203 23%	14 2%	29 3%	34 4%	0 0	21 1	901	2,76	2.76	
Religion	130 23%	66 12%	141 25%	45 8%	76 13%	10 2%	24 4%	33 6%	0 0	41 0	566	2,81	2.81	
Resort Tourism Management	115 49%	31 13%	35 15%	6 3%	14 6%	2 1%	0 0%	12 5%	0 0	18 0	233	3,35	3.35	
ROTC	71 72%	6 6%	3 3%	1 1%	5 5%	0 0%	2 2%	1 1%	0 0	0 0	9 0	98	3.69	
Science	87 43%	39 19%	34 17%	6 3%	7 3%	4 2%	1 0%	11 5%	0 0	13 0	202	3,29	3.29	
Sociology	252 24%	131 12%	259 25%	71 7%	168 16%	13 1%	43 4%	52 5%	0 0	63 2	1,054	2,85	2.85	
Spanish	171 18%	135 14%	215 23%	115 12%	118 13%	34 4%	43 5%	41 4%	0 0	67 1	940	2,77	2.77	
Statistics	53 11%	25 5%	99 21%	60 13%	120 25%	15 3%	52 11%	24 5%	0 0	27 0	475	2,37	2.37	
Swain Scholars	4 80%	0 0%	1 20%	0 0%	0 0%	0 0%	0 0%	0 0%	0 0	0 0	0 0	5	3.80	
Theatre	371 35%	119 11%	169 16%	58 5%	106 10%	12 1%	28 3%	52 5%	115 0	40 4	1,074	3,06	3.06	
University	1,193 54%	194 9%	311 14%	81 4%	136 6%	20 1%	37 2%	162 7%	29 0	60 5	2,228	3,24	3.24	
Wall Fellows	10 100%	0 0%	0 0%	0 0%	0 0%	0 0%	0 0%	0 0%	0 0	0 0	0 0	10	4.00	
Women's Studies	35 32%	16 15%	27 25%	5 5%	5 5%	3 3%	7 6%	3 3%	0 0	9 0	110	3,08	3.08	
TOTAL	14,850 30%	4,827 10%	9,799 20%	3,337 7%	5,767 12%	908 2%	1,933 4%	2,945 6%	1,415 219	3,326 62	49,408	2,90	2.90	

**CREDIT HOUR AND FTE PRODUCTION
BY DISCIPLINE
FALL 2013**

COLLEGE OF BUSINESS ADMINISTRATION

DISCIPLINE	Credit Hours Produced	FTEs Produced
Accounting	2,487	165.8
Economics	2,796	186.4
Finance	1,332	88.8
Management	6,284	418.9
Marketing	3,967	264.5
Resort Tourism Management	502	33.5
Graduate	880	73.3
Total	18,248	1231.2

COLLEGE OF EDUCATION

DISCIPLINE	Credit Hours Produced	FTEs Produced
Early Childhood Education	1,227	81.8
Elementary Education	507	33.8
Middle Level Education	225	15.0
Physical Education	336	22.4
Special Education	677	45.1
Teacher Education	3,075	205.0
Graduate	2,523	210.3
Total	8,570	613.4

**COLLEGE OF HUMANITIES AND
FINE ARTS**

DISCIPLINE	Credit Hours Produced	FTEs Produced
Art	4,771	318.1
Communication	4,267	284.5
English	11,638	776.6
Foreign Language	5,433	362.2
Graphic Design	352	23.5
History	7,743	516.2
Journalism	907	60.5
Music	2,471	164.7
Philosophy/Religion	4,816	321.1
Political Sci/Geography	6,707	447.1
Theatre	2,358	157.2
Graduate - ARTS	12	1.0
Graduate - ENGL	120	10.0
Graduate - MUS	18	1.5
Graduate - PSCI	3	0.3
Total	51,616	3444.4

COLLEGE OF SCIENCE

DISCIPLINE	Credit Hours Produced	FTEs Produced
Biology	6,916	461.1
Chemistry	3,269	217.9
Computer Science	3,773	251.5
Exercise Sport Science	4,445	296.3
Health Promotion	3,776	250.7
Marine Science	3,739	249.3
Math/Statistics	10,221	681.4
Nursing	684	45.6
Physically Active Living Skills	718	47.9
Physics	1,578	105.2
Psychology	4,784	318.9
Recreation	2,555	170.3
ROTC	136	9.1
Sociology	2,821	188.1
Graduate - BIOL	66	5.5
Graduate - CHEM	3	0.3
Graduate - CSCI	9	0.8
Graduate - MSCI	274	22.8
Graduate - PHYS	3	0.3
Graduate - SOC	0	0.0
Total	49,770	3322.9

Note: Credit hours and FTEs produced for University (UNIV) courses taught by administrative staff are excluded.

**CREDIT HOUR AND FTE PRODUCTION
BY DISCIPLINE
FALL 2014**

COLLEGE OF BUSINESS ADMINISTRATION

COLLEGE OF EDUCATION

DISCIPLINE	Credit Hours Produced	FTEs Produced	DISCIPLINE	Credit Hours Produced	FTEs Produced
Accounting	2,916	194.4	Early Childhood Education	1,302	86.8
Economics	3,375	225.0	Elementary Education	447	29.8
Finance	1,137	75.8	Middle Level Education	453	30.2
Hospitality, Resort, & Tourism Mgt	744	49.6	Physical Education	611	40.7
Management	5,723	381.5	Special Education	480	32.0
Marketing	4,588	305.9	Teacher Education	3,243	216.2
Graduate	904	75.3	Graduate	2,364	197.0
Total	19,387	1307.5	Total	8,900	632.7

**COLLEGE OF HUMANITIES AND
FINE ARTS**

COLLEGE OF SCIENCE

DISCIPLINE	Credit Hours Produced	FTEs Produced	DISCIPLINE	Credit Hours Produced	FTEs Produced
Anthropology	419	27.9	Biology	7,087	472.5
Art	4,440	296.0	Chemistry	2,919	194.6
Communication	5,087	339.1	Computer Science	4,079	271.9
English	13,292	886.1	Exercise Sport Science	4,520	301.3
Foreign Language	4,521	301.4	Health Promotion	3,920	261.3
Graphic Design	363	24.2	Marine Science	4,135	275.7
History	7,733	515.5	Math/Statistics	10,613	707.5
Journalism	1,359	90.6	Nursing	690	46.0
Music	2,544	169.6	Physically Active Living Skills	733	48.9
Philosophy/Religion	5,421	361.4	Physics	1,663	110.9
Political Sci/Geography	6,785	452.3	Psychology	5,559	370.6
Theatre	2,752	183.5	Recreation	2,909	193.9
Graduate - ARTS	24	2.0	ROTC	0	0.0
Graduate - ENGL	132	11.0	Sociology	2,952	196.8
Graduate - HIST	42	3.5	Graduate - BIOL	9	0.8
Graduate - MUS	78	6.5	Graduate - CSCI	3	0.3
Graduate - PSCI	36	3.0	Graduate - MATH	9	0.8
			Graduate - MSCI	201	16.8
			Graduate - PSYC	12	1.0
Total	55,028	3642.8	Total	52,013	3471.4

Note: Credit hours and FTEs produced for University (UNIV) courses taught by administrative staff are excluded.

**TRENDS IN STUDENT / FACULTY RATIO
FALL SEMESTERS 1995-2014**

YEAR				CHANGE FROM PRECEDING YEAR	
	FTE STUDENTS	FTE FACULTY	RATIO of FTE STUDENT/ FTE FACULTY	FTE STUDENTS	FTE FACULTY
1995	3,654	198.18 205.74 *	18.4 17.7 *	0.2%	-4.6%
1996	3,793	198.09 213.80 *	19.1 17.7 *	3.8%	0.0%
1997	3,874	225.44 **	17.2	2.1%	5.4%
1998	3,938	213.30	18.5	1.7%	-5.4%
1999	3,991	222.49	17.9	1.3%	4.3%
2000	4,101	228.64	17.9	2.8%	2.8%
2001	4,487	231.96	19.3	9.4%	1.5%
2002	5,095	264.02	19.3	13.6%	13.8%
2003	5,795	301.34	19.2	13.7%	14.1%
2004	6,141	320.38	19.2	6.0%	6.3%
2005	6,576	339.08	19.4	7.1%	5.8%
2006	6,944	361.45	19.2	5.6%	6.6%
2007	7,177	397.69	18.1	3.4%	10.0%
2008	7,610	435.50	17.5	6.0%	9.5%
2009	7,865	452.67	17.4	3.4%	3.9%
2010	8,302	493.20	16.8	5.6%	9.0%
2011	8,720	502.06	17.4	5.0%	1.8%
2012	8,859	529.94	16.7	1.6%	5.6%
2013	8,870	556.19	15.9	0.1%	5.0%
2014	9,437	580.68	16.3	6.4%	4.4%

*Recalculated FTE displayed for comparative purposes only.

**Methodology used in calculation of FTE faculty changed by South Carolina Commission on Higher Education to ensure consistency between institutions.

**TOTAL UNDERGRADUATE DEGREES AWARDED BY MAJOR
BETWEEN 2009 AND 2014***

COLLEGE/MAJOR	2009-2010	2010-2011	2011-2012	2012-2013	2013-2014
BUSINESS ADMINISTRATION					
Accounting	58	63	61	55	37
Economics (BA)	---	---	1	3	4
Economics (BS)	11	17	16	16	6
Finance	58	37	45	44	46
Management	160	151	165	146	144
Marketing	107	103	85	91	92
Hospitality, Resort, and Tourism Management	35	27	33	30	38
Total	429	398	406	385	367
EDUCATION					
Early Childhood Education	47	57	43	59	53
Elementary Education	39	42	42	42	40
Middle Level Education	14	11	9	21	16
Physical Education	29	19	15	15	8
Special Education	7	11	14	16	15
Total	136	140	123	153	132
HUMANITIES AND FINE ARTS					
Art Studio	24	21	23	19	17
Communication	75	102	115	112	119
English	33	45	38	34	36
Graphic Design	8	11	18	20	25
History	43	59	59	47	41
Intelligence and National Security Studies	---	---	---	---	3
Music	12	15	10	19	18
Musical Theatre	9	5	8	13	10
Philosophy	4	7	5	5	7
Political Science	45	56	55	37	47
Spanish	6	9	9	13	10
Theatre	5	7	12	16	12
Total	264	337	352	335	345
SCIENCE					
Biochemistry	---	---	4	5	6
Biology	67	70	70	76	69
Chemistry	6	4	6	4	3
Computer Science	10	23	20	13	14
Exercise and Sport Science	15	41	73	80	91
Health Administration	---	---	---	---	1
Health Promotion	74	64	54	56	70
Information Systems	1	5	6	8	21
Marine Science	63	84	68	87	74
Math	7	9	6	9	11
Nursing	---	---	9	17	37
Physics	1	1	3	4	3
Psychology	114	85	74	81	88
Recreation and Sport Management	42	58	59	84	73
Sociology	23	33	35	47	50
Total	423	477	487	571	611
UNIVERSITY COLLEGE					
Interdisciplinary Studies	37	27	31	66	98
Total	37	27	31	66	98
GRAND TOTAL	1,289	1,379	1,399	1,510	1,553

*Based on IPEDS (July 1 - June 30).

**TOTAL GRADUATE DEGREES AWARDED BY MAJOR
BETWEEN 2009 AND 2014***

COLLEGE/MAJOR	2009-2010	2010-2011	2011-2012	2012-2013	2013-2014
BUSINESS ADMINISTRATION					
Master of Accountancy	---	---	5	20	14
Master of Business Administration	13	22	28	42	53
Business Administration - Accounting**	7	9	---	---	---
Total	20	31	33	62	67
EDUCATION					
Master of Arts in Teaching					
Art	7	7	7	5	4
English	4	2	10	9	14
Mathematics	3	4	2	5	2
Music	4	6	2	7	2
Science	7	11	13	9	8
Social Studies	17	18	19	20	14
Master of Education					
Early Childhood Education**	10	6	---	---	---
Educational Leadership	---	---	51	33	41
Elementary Education**	10	12	---	---	---
Learning and Teaching					
Early and Elementary Grades	---	0	4	6	0
Instructional Technology	---	0	13	14	45
Literacy	---	4	12	7	9
Secondary Education**					
English	0	2	1	---	---
Mathematics	0	2	0	---	---
Music	1	0	0	---	---
Natural Science	2	2	1	---	---
Social Studies	0	2	3	---	---
Total	65	78	138	115	139
HUMANITIES AND FINE ARTS					
Master of Arts in Writing	---	---	3	12	13
Total	0	0	3	12	13
SCIENCE					
Coastal Marine and Wetland Studies	7	11	7	9	12
Applied Computing and Information Systems (Cert.)	---	---	---	1	1
Total	7	11	7	10	13
GRAND TOTAL	92	120	181	199	232

*Based on IPEDS (July 1 - June 30).

**Program discontinued

**TOTAL DEGREES AWARDED
BETWEEN
1974 AND 2014***

Associate in Arts (A.A.)	216
Associate in Science (A.S.)	226
A.S. Nursing	354
Bachelor of Arts (B.A.)	6,452
B.A.E.D. Education	2,745
B.A.I.S. Interdisciplinary Studies	1,282
Bachelor of Fine Arts (B.F.A.)	10
Bachelor of Science (B.S.)	5,249
B.S. Business Administration	6,992
B.S. Education	308
B.S. Interdisciplinary Studies	209
B.S. Nursing	63
B.S. Physical Education	753
M.A. Writing	28
M.A.T.	438
MAcc	39
MBA	211
M.Ed.	599
M.S. Coastal Marine and Wetland Studies	71
M.S. Instructional Technology	11
Post Master's Certificate	2
TOTAL	26,258

*1974 was the first year in which a baccalaureate degree was awarded at the University.

FACULTY
TABLE OF CONTENTS

Faculty Highlights..... 69

Summary of Employees Holding Faculty Rank..... 71

Faculty Profile by College 72

Faculty Profile by Academic Discipline, Fall 2013..... 74

Faculty Profile by Academic Discipline, Fall 2014..... 75

Profile of Full-Time Teaching Faculty by Rank 76

Rank and Degree of Full-Time Employees Holding Faculty Rank 77

Full-Time Faculty by College and Rank 78

FTE Teaching Faculty by College and Rank..... 79

Full-Time Faculty Nine-Month Salary Trends..... 80

Full-Time Faculty Average Salary Comparison by Rank..... 81

Student Credit Hours Taught by Full-Time Faculty 82

Student Credit Hours Taught by FTE Faculty 83

FACULTY HIGHLIGHTS

Fact Book, 2014

Faculty Profile

In Fall 2014, there were 437 full-time employees with faculty rank. Of the full-time faculty, 42% were female and 58% male.

Of full-time employees with faculty rank, 79% possessed terminal degrees and 59% were tenured. Of this same group 21% were professors, 26% were associate professors, 29% were assistant professors, and 24% were instructors/other. Over 65% of FTE students were taught by full-time faculty.

Full-Time Faculty by College and Rank

In Fall 2014, each college had at least or more than 72% of its full-time teaching staff holding the rank of Assistant Professor or higher. The breakdown for each college is as follows: Wall College of Business Administration (72%), Spadoni College of Education (91%), Edwards College of Humanities and Fine Arts (76%), and College of Science (75%).

The *Faculty* section is in alignment with the following supporting key strategy and goals from the *Coastal Carolina University Strategic Plan*:

Strategy 2: Ensuring Student Success

Increase retention and graduation rates by supporting programs and services that enrich the student learning and living environment and broaden the diversity of students seeking Coastal Carolina University as their choice for educational advancement.

Goal 2.3. Supportive Learning and Living Facilities: Provide facilities and services that support a rich academic, residential, athletic, co-curricular, and sustainable environment in which students, faculty, and staff effectively interact.

Goal 3.1. Highly Qualified Faculty and Staff: Recruit and retain highly qualified and diverse faculty and staff.

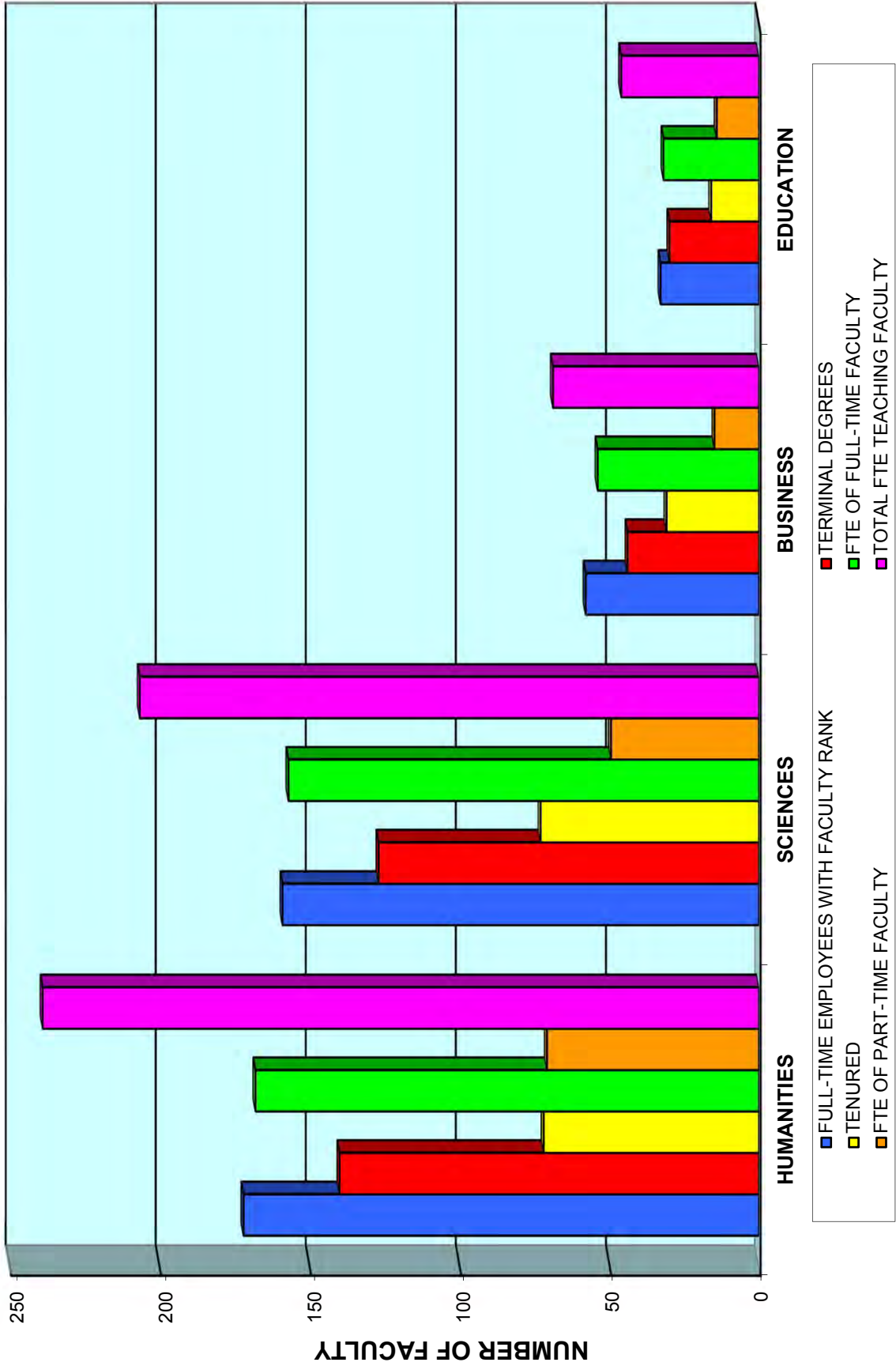
**SUMMARY OF EMPLOYEES
HOLDING FACULTY RANK
FALL 2014**

Full-Time Teaching Faculty	408
Faculty on Leave/Special Assignment	8
Part-Time Teaching Faculty	288
Total Teaching Faculty	704
Administrators	11
Librarians	10
Librarians on Leave/Special Assignment	0
Total Full-Time Employees Holding Faculty Rank	437
Total Faculty Employees	725
Total FTE of Full-Time Faculty	415.00
Total FTE of Part-Time Faculty	165.68
Total FTE	580.68

**COASTAL CAROLINA UNIVERSITY
FACULTY PROFILE BY COLLEGE, FALL 2014**

	BUSINESS	EDUCATION	HUMANITIES	SCIENCE	ACADEMIC COLLEGE SUB-TOTAL	LIBRARY/ OTHER	GRAND TOTAL
FULL-TIME EMPLOYEES WITH FACULTY RANK (INCLUDES DEANS, ADMINISTRATORS, AND FACULTY ON LEAVE)							
MALE	37	13	104	95	249	3	252
FEMALE	21	20	68	64	173	12	185
TOTAL	58	33	172	159	422	15	437
TERMINAL DEGREES	44	30	140	127	341	6	347
% TERMINAL DEGREES	76%	91%	81%	80%	81%	40%	79%
TENURED (of eligible Tenure-Track)	31	16	72	73	192	6	198
% TENURED	74%	53%	55%	61%	60%	55%	59%
RANK							
PROFESSOR	25	7	31	25	88	3	91
ASSOCIATE PROFESSOR	8	10	41	52	111	4	115
ASSISTANT PROFESSOR	9	13	58	43	123	4	127
INSTRUCTOR/OTHER	16	3	42	39	100	4	104
TOTAL	58	33	172	159	422	15	437
PART-TIME FACULTY							
	24	36	82	96	238	50	288
FTE TEACHING FACULTY							
FTE OF FULL-TIME FACULTY	54.00	32.00	168.00	157.00	411.00	4.00	415.00
FTE OF PART-TIME FACULTY	14.89	14.14	70.88	49.54	149.46	16.23	165.68
TOTAL FTE TEACHING FACULTY	68.89	46.14	238.88	206.54	560.46	20.23	580.68
FTE STUDENTS							
TOTAL FTE STUDENTS TAUGHT	1307.53	632.73	3673.73	3471.43	9085.42	352.13	9437.55
FTE STUDENTS TAUGHT BY FULL-TIME FACULTY	988.25	433.43	2432.60	2428.52	6282.80	61.20	6344.00
% FTE STUDENTS TAUGHT BY FULL-TIME FACULTY	75.58%	68.50%	66.22%	69.96%	69.15%	17.38%	67.22%
STUDENT/FACULTY FTE RATIO	18.98	13.71	15.38	16.81	16.21	17.41	16.25

**COASTAL CAROLINA UNIVERSITY
FACULTY PROFILE BY COLLEGE
FALL SEMESTER, 2014**



**FACULTY PROFILE
BY ACADEMIC DISCIPLINE, FALL 2013**

<u>DISCIPLINE</u>	Number of Full-Time Faculty*		# FTE Teaching Faculty	# Terminal Degrees Full-Time Faculty**	% Terminal Degrees	# Masters Degrees Full-Time Faculty	% Masters	Number Tenured	% Tenured ***
	Male	Female							
Art/Graphic Design	10	8	18	17	94%	1	6%	7	47%
Biology	14	6	20	18	90%	2	10%	12	75%
Business Administration	37	20	57	42	74%	15	26%	31	76%
Chemistry	10	6	16	12	75%	4	25%	4	44%
Communication/Journalism	7	9	16	11	69%	5	31%	3	30%
Computer Science	7	4	11	5	45%	6	55%	2	25%
English	16	20	36	28	78%	8	22%	15	71%
Exercise Science/PALS	7	3	10	8	80%	2	20%	2	25%
Foreign Language	10	8	18	9	50%	9	50%	4	80%
Geography	2	1	3	1	33%	2	67%	0	0%
Health Promotion	3	7	10	6	60%	4	40%	3	50%
History	11	6	17	14	82%	3	18%	9	69%
Marine Science	15	6	21	19	90%	2	10%	10	63%
Mathematics/Statistics	15	13	28	13	46%	15	54%	5	38%
Music	11	5	16	13	81%	3	19%	10	71%
Nursing	0	2	2	2	100%	0	0%	0	0%
Physical Education	1	1	2	1	50%	1	50%	1	100%
Physics/Astronomy	7	2	9	9	100%	0	0%	5	71%
Politics	12	4	16	14	88%	2	13%	10	71%
Psychology	7	6	13	13	100%	0	0%	8	67%
Recreation	3	5	8	8	100%	0	0%	3	43%
Religion and Philosophy	10	4	14	14	100%	0	0%	6	67%
Sociology/Anthropology	4	4	8	8	100%	0	0%	6	75%
Teacher Education	12	20	32	30	94%	2	6%	13	108%
Theatre	8	4	12	8	67%	4	33%	5	50%
Other/ROTC	0	4	4	3	75%	1	25%	1	100%
TOTAL	239	178	417	326	78%	91	22%	175	63%

NOTES:

*Includes administrators (11), excludes librarians (11) and faculty on leave and special assignment (8).

**Includes all terminal degrees whether or not in teaching area.

***Percentage based only on faculty eligible for tenure (excludes visiting, lecturers, instructors).

**FACULTY PROFILE
BY ACADEMIC DISCIPLINE, FALL 2014**

<u>DISCIPLINE</u>	Number of Full-Time Faculty*		# FTE Teaching Faculty	# Terminal Degrees Full-Time Faculty**	% Terminal Degrees	# Masters Degrees Full-Time Faculty		Number Tenured	% Tenured***
	Male	Female				Total	Masters Faculty		
Anthropology	0	2	2.00	2	100%	0	0%	1	7%
Art/Graphic Design	11	7	25.55	18	100%	0	0%	9	60%
Biology	15	7	28.26	20	91%	2	9%	13	81%
Business Administration	37	20	68.89	43	75%	14	25%	31	76%
Chemistry	10	5	16.25	12	80%	3	20%	4	44%
Communication/Journalism	7	10	22.48	12	71%	5	29%	3	30%
Computer Science	7	4	18.39	7	64%	4	36%	4	50%
English	18	20	56.87	31	82%	7	18%	14	67%
Exercise Science/PALS	6	4	18.80	8	80%	2	20%	2	25%
Foreign Language	7	6	17.48	7	54%	6	46%	3	60%
Geography	2	1	4.99	2	67%	1	33%	0	0%
Health Promotion	3	7	14.98	6	60%	4	40%	4	67%
History	12	4	24.47	13	81%	3	19%	9	69%
Marine Science	18	7	27.57	23	92%	2	8%	12	75%
Mathematics/Statistics	16	10	31.06	14	54%	12	46%	8	62%
Music	11	5	23.06	13	81%	3	19%	9	64%
Nursing	0	1	4.35	0	0%	1	100%	0	0%
Physical Education	1	1	2.75	1	50%	1	50%	1	100%
Physics/Astronomy	5	2	7.42	7	100%	0	0%	5	71%
Politics	11	5	18.74	14	88%	2	13%	9	64%
Psychology	7	7	18.73	12	86%	2	14%	10	83%
Recreation	3	5	9.25	8	100%	0	0%	4	57%
Religion and Philosophy	11	4	20.77	14	93%	1	7%	5	56%
Sociology	3	5	9.49	8	100%	0	0%	5	63%
Teacher Education	12	19	43.40	29	94%	2	6%	15	125%
Theatre	9	4	17.48	9	69%	4	31%	5	50%
Other/ROTC	1	4	20.23	5	100%	0	0%	1	100%
TOTAL	243	176	573.68	338	81%	81	19%	186	66%

NOTES:

*Includes administrators (11), excludes librarians (10) and faculty on leave and special assignment (8).

**Includes all terminal degrees whether or not in teaching area.

***Percentage based only on faculty eligible for tenure (excludes visiting, lecturers, instructors).

**PROFILE OF FULL-TIME TEACHING FACULTY
BY RANK, FALL 2014**

<u>RANK</u>	Doctoral/Terminal		Master's		<u>TOTAL</u>
	<u>MEN</u>	<u>WOMEN</u>	<u>MEN</u>	<u>WOMEN</u>	
Professor	57	22	0	0	79
Associate	64	44	1	1	110
Assistant	64	50	5	4	123
Instructor	0	0	6	5	11
Lecturer	19	15	26	33	93
TOTAL	204	131	38	43	416

NOTES:

Includes faculty on leave and special assignment (8).
Excludes administrators (11) and librarians (10).

**RANK AND DEGREE OF
FULL-TIME EMPLOYEES HOLDING FACULTY RANK
FALL 2014**

<u>DISCIPLINE</u>	Professor		Associate Professor		Assistant Professor		Instructor/Lecturer		Total
	T	M	T	M	T	M	T	M	
Anthropology	0	0	1	0	1	0	0	0	2
Art/Graphic Design	6	0	3	0	9	0	0	0	18
Biology	6	0	7	0	5	0	2	2	22
Business Administration	25	0	8	0	8	0	2	14	57
Chemistry	1	0	3	0	6	0	2	3	15
Communication/Journalism	2	0	1	0	8	0	1	5	17
Computer Science	0	0	3	0	4	1	0	3	11
English	5	0	8	0	10	1	8	6	38
Exercise Science/PALS	2	0	0	0	6	0	0	2	10
Foreign Language	0	0	3	0	2	0	2	6	13
Geography	0	0	0	0	2	0	0	1	3
Health Promotion	1	0	4	0	1	0	0	4	10
History	4	0	5	0	3	0	1	3	16
Marine Science	8	0	7	0	6	0	2	2	25
Mathematics/Statistics	1	0	7	0	5	0	1	12	26
Music	4	0	6	0	3	1	0	2	16
Nursing	0	0	1	0	0	0	0	0	1
Physical Education	0	0	1	0	0	0	0	1	2
Physics/Astronomy	0	0	5	0	0	0	2	0	7
Politics	4	0	4	1	5	0	1	1	16
Psychology	4	0	6	0	2	2	0	0	14
Recreation	0	0	4	0	3	0	1	0	8
Religion and Philosophy	2	0	3	0	6	0	3	1	15
Sociology	2	0	3	0	2	0	1	0	8
Teacher Education	7	0	9	0	13	0	0	2	31
Theatre	2	0	3	0	3	4	1	0	13
Other/ROTC	1	2	1	3	0	4	4	0	15
TOTAL	87	2	106	4	113	13	34	70	429

NOTES:
Includes deans, administrators, and librarians (21). Excludes faculty on leave and special assignment (8).
T = terminal degree, M = master's degree

**FULL-TIME FACULTY BY COLLEGE AND RANK
FALL SEMESTERS 2005-2014**

COLLEGE AND RANK	2005	2006	2007	2008	2009	2010	2011	2012	2013	2014
BUSINESS ADMINISTRATION										
Professor	8	6	9	10	13	15	14	17	20	25
Associate	11	12	7	11	13	16	21	17	16	8
Assistant	14	16	22	18	14	12	9	11	6	9
Instructor / Lecturer	0	1	3	7	8	9	8	12	16	16
Total	33	35	41	46	48	52	52	57	58	58
EDUCATION										
Professor	7	7	7	6	6	2	4	4	4	7
Associate	8	12	14	14	14	14	12	11	12	10
Assistant	15	13	15	18	19	13	9	14	15	13
Instructor / Lecturer	3	3	1	4	5	3	6	3	3	3
Total	33	35	37	42	44	32	31	32	34	33
HUMANITIES AND FINE ARTS										
Professor	22	25	23	29	29	28	31	32	32	31
Associate	25	24	23	23	27	28	29	34	40	41
Assistant	29	30	39	37	37	43	45	45	46	58
Instructor / Lecturer	17	19	18	33	33	39	44	48	52	42
Total	93	98	103	122	126	138	149	159	170	172
SCIENCE										
Professor	18	15	17	15	16	20	23	22	23	25
Associate	25	25	23	20	23	28	32	35	40	52
Assistant	31	32	36	44	41	47	41	49	54	43
Instructor / Lecturer	14	17	19	25	28	37	36	37	42	39
Total	88	89	95	104	108	132	132	143	159	159
LIBRARY										
Professor	2	2	2	3	3	3	2	2	3	3
Associate	3	2	2	3	3	3	5	3	4	4
Assistant	2	4	4	3	3	6	4	6	5	4
Instructor / Lecturer	1	0	0	0	0	1	1	3	3	4
Total	8	8	8	9	9	13	12	14	15	15
GRAND TOTAL	255	265	284	323	335	367	376	405	436	437

NOTE:

Includes deans, administrators, librarians and faculty on leave and special assignment.

**FTE TEACHING FACULTY BY COLLEGE AND RANK
FALL SEMESTERS 2008-2014**

COLLEGE AND RANK	2008	2009	2010	2011	2012	2013	2014
BUSINESS ADMINISTRATION							
Professor	8.00	11.00	13.00	12.00	14.00	17.00	22.00
Associate	11.00	13.00	16.00	21.00	17.00	16.00	8.00
Assistant	18.00	14.00	12.00	9.00	11.00	6.00	8.00
Instructor / Lecturer	7.00	8.00	9.00	8.00	12.00	16.00	16.00
Other	12.08	7.93	7.14	7.72	6.39	8.94	14.89
Total	56.08	53.93	57.14	57.72	60.39	63.94	68.89
EDUCATION							
Professor	2.00	2.00	1.00	3.00	3.00	3.00	6.00
Associate	12.00	9.00	13.00	12.00	11.00	12.00	10.00
Assistant	18.00	12.00	13.00	9.00	14.00	15.00	13.00
Instructor / Lecturer	4.00	2.00	3.00	6.00	3.00	3.00	3.00
Other	34.14	13.29	19.53	13.85	15.04	13.07	14.14
Total	70.14	38.29	49.53	43.85	46.04	46.07	46.14
HUMANITIES AND FINE ARTS							
Professor	24.00	26.00	26.00	27.00	28.00	28.00	28.00
Associate	21.00	25.00	26.00	26.00	30.00	39.00	40.00
Assistant	37.00	37.00	43.00	45.00	45.00	46.00	58.00
Instructor / Lecturer	33.00	33.00	39.00	44.00	48.00	51.00	42.00
Other	60.21	69.98	73.04	70.52	66.78	64.31	70.88
Total	175.21	190.98	207.04	212.52	217.78	228.31	238.88
SCIENCE							
Professor	12.00	15.00	17.00	20.00	19.00	21.00	23.00
Associate	18.00	26.00	28.00	31.00	34.00	40.00	52.00
Assistant	44.00	48.00	47.00	41.00	49.00	53.00	43.00
Instructor / Lecturer	25.00	31.00	37.00	36.00	37.00	42.00	39.00
Other	21.58	36.54	35.69	43.48	50.79	47.99	49.54
Total	120.58	156.54	164.69	171.48	189.79	203.99	206.54
UNIVERSITY COLLEGE							
Professor	0.25	0.25	0.00	0.75	0.00	0.25	0.08
Associate	0.00	0.25	0.00	0.25	0.00	0.00	0.00
Assistant	0.25	0.50	0.50	0.83	0.00	0.50	0.08
Instructor / Lecturer	0.00	0.00	1.00	1.00	3.00	3.00	4.00
Other	12.99	11.95	13.29	13.67	12.95	10.13	16.06
Total	13.49	12.94	14.79	16.50	15.95	13.87	20.23
GRAND TOTAL	435.50	452.67	493.20	502.06	529.94	556.19	580.68

**FULL-TIME FACULTY NINE-MONTH SALARY TRENDS
2010-2014**

	Average Salary # 2010-2011	Average Salary # 2011-2012	Average Salary # 2012-2013	Average Salary # 2013-2014	Average Salary # 2014-2015
BY RANK					
Professor	58 \$82,640	63 \$84,168	64 \$86,767	67 \$90,652	77 \$96,117
Associate	84 \$68,877	93 \$70,535	92 \$70,706	104 \$70,351	105 \$71,870
Assistant	115 \$56,232	104 \$58,234	119 \$59,999	120 \$59,586	122 \$60,975
Instructor	16 \$45,593	13 \$46,112	12 \$47,472	11 \$45,347	11 \$47,907
Lecturer	73 \$40,291	82 \$41,322	91 \$42,985	104 \$43,465	93 \$47,403
BY GENDER					
Female	144 \$55,698	151 \$58,486	166 \$59,635	175 \$59,540	173 \$63,609
Male	202 \$62,850	204 \$64,094	212 \$64,999	231 \$65,542	235 \$69,436
BY DEGREE					
Doctoral/ Terminal	275 \$64,013	280 \$66,167	298 \$67,122	315 \$67,527	328 \$71,105
Master's	71 \$43,840	75 \$45,065	80 \$45,960	91 \$47,127	80 \$49,993
TOTAL	346 \$59,873	355 \$61,709	378 \$62,644	406 \$62,955	408 \$66,965

Note:
Excludes administrators (11), librarians (10), and faculty on leave (8).

**FULL-TIME FACULTY AVERAGE SALARY COMPARISON BY RANK
FALL SEMESTERS 2007-2012**

CATEGORY	PROFESSOR	ASSOCIATE	ASSISTANT	INSTRUCTOR	ALL RANKS
Fall 2007					
Coastal Carolina	\$78,667	\$63,887	\$57,786	\$41,300	\$61,905
South Carolina	\$72,555	\$59,439	\$51,038	\$44,602	\$54,925
Southern States (SREB)*	\$72,976	\$60,271	\$50,262	\$39,967	\$56,062
National**	\$87,248	\$68,083	\$58,270	\$43,713	\$67,533
Fall 2008					
Coastal Carolina	\$82,159	\$68,617	\$58,005	\$44,910	\$64,277
South Carolina	\$74,213	\$60,118	\$51,041	\$44,615	\$55,216
Southern States (SREB)*	\$75,325	\$61,721	\$51,686	\$41,546	\$57,308
National**	\$91,755	\$71,299	\$60,759	\$44,863	\$70,953
Fall 2009					
Coastal Carolina	\$83,036	\$68,397	\$57,468	\$46,076	\$65,270
South Carolina	\$73,289	\$57,589	\$50,954	\$44,511	\$54,236
Southern States (SREB)*	\$76,350	\$61,373	\$52,433	\$42,023	\$57,804
National**	\$92,313	\$71,645	\$61,495	\$45,504	\$71,500
Fall 2010					
Coastal Carolina	\$82,640	\$68,877	\$56,232	\$45,593	\$59,873
South Carolina	\$73,147	\$58,565	\$50,854	\$43,835	\$53,950
Southern States (SREB)*	\$76,382	\$61,304	\$52,229	\$41,315	\$57,515
National**	\$93,277	\$72,195	\$62,008	\$45,893	\$72,291
Fall 2011					
Coastal Carolina	\$84,168	\$70,535	\$58,234	\$46,112	\$61,709
South Carolina	\$78,655	\$66,118	\$56,330	\$45,994	\$61,250
Southern States (SREB)*	\$76,830	\$64,125	\$54,443	\$45,326	\$59,816
National**	\$94,733	\$72,560	\$63,041	\$45,769	\$72,894
Fall 2012					
Coastal Carolina	\$86,767	\$70,706	\$59,999	\$47,472	\$62,644
South Carolina	\$80,280	\$66,619	\$58,090	\$47,902	\$62,604
Southern States (SREB)*	\$75,489	\$63,430	\$54,953	\$42,626	\$58,816
National**	\$94,328	\$72,921	\$64,230	\$48,782	\$76,301

*Southern Regional Educational Board (SREB) average salaries reported for public baccalaureate institutions (SREB VI).

**College and University Professional Association (CUPA) averages for noncollective bargaining institutions, as published in CUPA's National Faculty Salary Survey by discipline and rank in public colleges and universities.

**STUDENT CREDIT HOURS TAUGHT
BY FULL-TIME FACULTY
FALL SEMESTERS 2012-2014**

Discipline	2012			2013			2014		
	# Full-Time Faculty	Student Credit Hours Taught by Full-Time Faculty	Average Credit Hours Taught by Full-Time Faculty	# Full-Time Faculty	Student Credit Hours Taught by Full-Time Faculty	Average Credit Hours Taught by Full-Time Faculty	# Full-Time Faculty	Student Credit Hours Taught by Full-Time Faculty	Average Credit Hours Taught by Full-Time Faculty
College of Business Administration									
Business Administration	55.00	15,116.00	274.84	55.00	14,840.00	269.82	55.00	14,658.00	266.51
College Total	55.00	15,116.00	274.84	55.00	14,840.00	269.82	55.00	14,658.00	266.51
College of Education									
Physical Education	2.00	428.00	214.00	2.00	307.00	153.50	2.00	407.00	203.50
Teacher Education	29.00	5,211.00	179.69	31.00	5,414.00	174.65	30.00	5,613.00	187.10
College Total	31.00	5,639.00	181.90	33.00	5,721.00	173.36	32.00	6,020.00	188.13
College of Humanities and Fine Arts									
Art	14.00	2,764.00	197.43	15.00	2,782.00	185.47	15.00	2,635.00	175.67
Communication/Journalism	15.00	4,006.00	267.07	16.00	4,348.00	271.75	17.00	4,913.00	289.00
English	33.00	7,563.00	229.18	35.00	7,651.00	218.60	36.00	8,350.00	231.94
Foreign Languages	18.00	4,415.00	245.28	18.00	4,758.00	264.33	13.00	3,453.00	265.62
Geography	2.00	969.00	484.50	3.00	993.00	331.00	3.00	963.00	321.00
Graphic Design	3.00	369.00	123.00	3.00	352.00	117.33	3.00	363.00	121.00
History/Anthropology	19.00	5,178.00	272.53	18.00	4,299.00	238.83	19.00	4,847.00	255.11
Music	16.00	1,108.00	69.25	17.00	1,373.00	80.76	17.00	1,791.00	105.35
Philosophy/Religion	11.00	2,709.00	246.27	14.00	3,685.00	263.21	16.00	3,816.00	238.50
Politics	14.00	3,396.00	242.57	15.00	3,746.00	249.73	16.00	3,857.00	241.06
Theatre	10.00	1,286.00	128.60	12.00	1,335.00	111.25	13.00	1,339.00	103.00
College Total	155.00	33,763.00	217.83	166.00	35,322.00	212.78	168.00	36,327.00	216.23
College of Science									
Biology	20.00	4,155.00	207.75	18.00	4,199.00	233.28	20.00	4,107.00	205.35
Chemistry	13.00	2,950.00	226.92	16.00	2,799.00	174.94	15.00	2,640.00	176.00
Computer Science	11.00	1,684.00	153.09	11.00	1,992.00	181.09	11.00	1,905.00	173.18
Health Prom/Exercise Science/PALS	14.00	3,752.00	268.00	20.00	4,480.00	224.00	20.00	5,182.00	259.10
Math	29.00	8,948.00	308.55	29.00	8,609.00	296.86	26.00	8,729.00	335.73
Marine Science	20.00	3,372.00	168.60	22.00	3,816.00	173.45	17.00	3,344.00	196.71
Nursing	2.00	255.00	127.50	2.00	306.00	153.00	1.00	133.00	133.00
Physics	7.00	1,222.00	174.57	9.00	1,444.00	160.44	7.00	1,515.00	216.43
Psychology	12.00	3,188.00	265.67	14.00	2,993.00	213.79	14.00	3,594.00	256.71
Recreation and Sport Management	5.00	1,821.00	364.20	8.00	2,213.00	276.63	8.00	2,456.00	307.00
School of Coastal & Marine Systems Sci	---	---	---	---	---	---	9.00	470.00	52.22
Sociology	7.00	2,000.00	285.71	8.00	2,092.00	261.50	9.00	2,298.00	255.33
College Total	140.00	33,347.00	238.19	157.00	34,943.00	222.57	157.00	36,373.00	231.68
Other	3.00	573.00	191.00	3.00	770.00	256.67	4.00	888.00	222.00
University Total	384.00	88,438.00	230.31	414.00	91,596.00	221.25	416.00	94,266.00	226.60

**STUDENT CREDIT HOURS TAUGHT
BY FTE FACULTY
FALL SEMESTERS 2012-2014**

Discipline	2012			2013			2014		
	# FTE Faculty	Student Credit Hours Taught by FTE Faculty	Average Credit Hours Taught by FTE Faculty	# FTE Faculty	Student Credit Hours Taught by FTE Faculty	Average Credit Hours Taught by FTE Faculty	# FTE Faculty	Student Credit Hours Taught by FTE Faculty	Average Credit Hours Taught by FTE Faculty
College of Business Administration									
Business Administration	60.39	17,616.00	291.70	63.94	18,248.00	285.39	68.89	19,387.00	281.42
College Total	60.39	17,616.00	291.70	63.94	18,248.00	285.39	68.89	19,387.00	281.42
College of Education									
Physical Education	3.25	753.00	232.05	2.08	336.00	161.31	2.75	611.00	222.42
Teacher Education	42.79	8,226.00	192.23	43.99	8,234.00	187.20	43.40	8,289.00	191.01
College Total	46.04	8,979.00	195.04	46.07	8,570.00	186.03	46.14	8,900.00	192.88
College of Humanities and Fine Arts									
Art/Graphic Design	24.97	5,041.00	201.90	26.56	5,135.00	193.31	25.54	4,827.00	188.96
Communication/Journalism	16.25	4,387.00	270.05	19.53	5,174.00	264.95	22.48	6,446.00	286.74
English	53.58	12,559.00	234.39	52.43	11,758.00	224.28	57.87	13,424.00	231.97
Foreign Languages	22.48	5,906.00	262.75	20.99	5,433.00	258.66	17.48	4,521.00	258.64
Geography	3.49	1,680.00	480.82	4.99	1,686.00	337.74	4.99	1,716.00	343.89
History/Anthropology	23.48	7,101.00	302.40	27.63	7,743.00	280.26	27.47	8,194.00	298.29
Music	23.43	2,363.00	100.85	21.99	2,489.00	113.18	24.06	2,622.00	108.98
Philosophy/Religion	16.98	4,392.00	258.72	18.73	4,816.00	257.11	21.77	5,421.00	249.01
Politics	18.40	5,045.00	274.26	19.23	5,024.00	261.22	19.74	5,105.00	258.61
Theatre	14.73	2,515.00	170.73	16.23	2,358.00	145.26	17.48	2,752.00	157.44
College Total	217.78	50,989.00	234.13	228.31	51,616.00	226.07	238.88	55,028.00	230.35
College of Science									
Biology	28.28	6,929.00	245.06	26.24	6,982.00	266.04	28.26	7,096.00	251.10
Chemistry	13.91	3,149.00	226.34	17.66	3,272.00	185.28	16.25	2,919.00	179.63
Computer Science	16.31	3,242.00	198.75	17.39	3,782.00	217.47	18.39	4,082.00	221.97
Health Prom/Exercise Science/PALS	31.34	9,310.00	297.04	35.36	9,164.00	259.19	33.78	9,173.00	271.55
Math	33.23	10,559.00	317.76	33.23	10,221.00	307.56	31.06	10,622.00	341.98
Marine Science	20.87	3,549.00	170.04	22.91	4,013.00	175.14	19.24	3,851.00	200.11
Nursing	3.22	392.00	121.85	3.98	684.00	171.95	4.35	690.00	158.62
Physics	8.58	1,523.00	177.57	9.42	1,581.00	167.92	7.42	1,663.00	224.28
Psychology	17.06	5,297.00	310.44	17.48	4,784.00	273.65	18.73	5,571.00	297.44
Recreation	7.41	2,625.00	354.39	9.00	2,555.00	284.02	9.25	2,909.00	314.66
ROTC	1.08	152.00	140.61	1.33	136.00	102.41	1.25	164.00	131.73
School of Coastal & Marine Systems Sci	---	---	---	---	---	---	9.33	485.00	51.98
Sociology	8.49	2,612.00	307.51	9.99	2,821.00	282.33	10.49	2,952.00	281.30
College Total	189.78	49,339.00	259.97	203.99	49,995.00	245.09	207.79	52,177.00	251.10
University/Other									
University/Other	15.95	5,091.00	319.22	13.87	3,707.00	267.19	18.98	5,118.00	269.72
University Total	529.94	132,014.00	249.11	556.19	132,136.00	237.58	560.68	140,610.00	242.15

RESOURCES

TABLE OF CONTENTS

Resources Highlights	87
Annual Tuition and Residence Hall Fees	89
South Carolina Public Institutions Academic Year Costs, Tuition and Required Fees, 2014-2015 Academic Year Comparison of In-State to Out-of-State	90
Total Financial Aid Received by Coastal Carolina University Students from All Sources.....	92
Buildings Inventory.....	94

RESOURCES HIGHLIGHTS

Fact Book, 2014

The Resources section includes Coastal Carolina University's annual tuition and residence hall fees, a comparison of in-state and out-of-state costs for South Carolina senior public institutions, total financial aid disbursements to Coastal Carolina University students by source, and the University's building inventory.

- For Fall 2014, Coastal Carolina University had a 4% increase in in-state tuition.
- Coastal Carolina University students experienced a 62% increase in total financial aid received over the five-year period from 2008-2009 to 2013-2014.
- For Fall 2014, Coastal Carolina University operated/managed 115 facilities with 158 classrooms and laboratories and 731,027 net square feet for educational and general (E&G) usage.

The *Resources* section is in alignment with the following supporting key strategies and goals from the *Coastal Carolina University Strategic Plan*:

Strategy 1: Meeting the Educational Needs of Students and Community

Expand degree and non-degree program offerings and formats while maintaining quality in all programs.

Goal 1.3. Improved Access to Education: Enhance accessibility of education at Coastal Carolina University while maintaining quality standards.

Strategy 2: Ensuring Student Success

Increase retention and graduation rates by supporting programs and services that enrich the student learning and living environment and broaden the diversity of students seeking Coastal Carolina University as their choice for educational advancement.

Goal 2.3. Supportive Learning and Living Facilities: Provide facilities and services that support a rich academic, residential, athletic, co-curricular, and sustainable environment in which students, faculty, and staff effectively interact.

Strategy 4: Ensuring Financial Viability and Managed Growth

Ensure responsible financial management practices that are based on a clear commitment to enrollment growth and consistent with the mission of the University.

Goal 4.1. Comprehensive Financial Plan: Develop, implement, and communicate a comprehensive financial plan that includes projections of tuition, state support, grant support, and philanthropy.

Goal 4.2. Broadened Base of Financial Support: Broaden the University's base of financial support.

**ANNUAL TUITION AND RESIDENCE HALL FEES
1996 - 2014**

YEAR	IN-STATE		OUT-OF-STATE		Residence Hall Fees
	Full-Time Student	Per Credit Hour	Full-Time Student	Per Credit Hour	
1996-1997	\$2,910	\$125	\$7,840	\$330	\$4,300
1997-1998	\$3,100	\$130	\$8,320	\$348	\$4,640
1998-1999	\$3,220	\$135	\$8,790	\$370	\$4,800
1999-2000	\$3,340	\$140	\$9,280	\$385	\$4,970
2000-2001	\$3,500	\$147	\$9,810	\$408	\$5,240
2001-2002	\$3,770	\$159	\$10,680	\$445	\$5,450
2002-2003	\$4,350	\$182	\$11,760	\$491	\$5,610
2003-2004	\$5,190	\$215	\$12,870	\$540	\$5,770
2004-2005	\$6,100	\$250	\$14,200	\$595	\$5,970
2005-2006	\$6,860	\$290	\$15,100	\$630	\$6,280
2006-2007	\$7,500	\$315	\$16,190	\$675	\$6,690
2007-2008	\$7,600	\$317	\$16,590	\$691	\$6,680
2008-2009	\$8,650	\$360	\$18,090	\$754	\$7,080
2009-2010	\$8,950	\$373	\$18,770	\$782	\$7,200
2010-2011	\$9,390	\$382	\$20,270	\$830	\$7,350
2011-2012	\$9,760	\$407	\$21,560	\$898	\$7,700
2012-2013	\$9,760	\$407	\$22,050	\$920	\$7,700
2013-2014	\$9,760	\$411	\$22,770	\$942	\$7,860
2014-2015	\$10,140	\$425	\$23,480	\$975	\$8,440

NOTE:

Beginning in 1996-1997, Residence Hall fees include required board plan and health service fee.

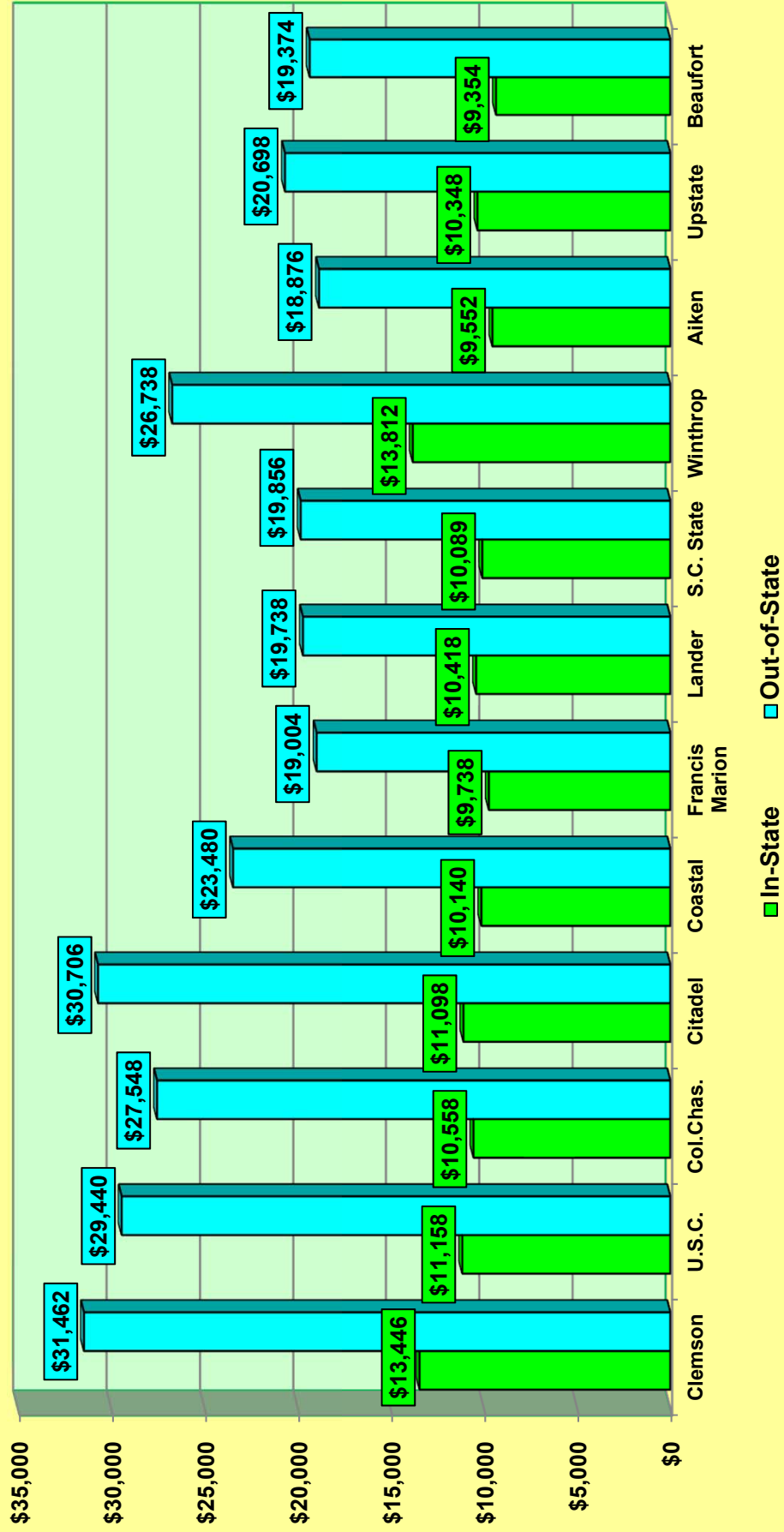
**SOUTH CAROLINA PUBLIC INSTITUTIONS' ACADEMIC YEAR COSTS
TUITION AND REQUIRED FEES
COMPARISON OF IN-STATE TO OUT-OF-STATE
2014-2015**

	<u>IN-STATE</u>	<u>OUT-OF-STATE</u>
The Citadel	\$11,098	\$30,706
Clemson University	\$13,446	\$31,462
Coastal Carolina University	\$10,140	\$23,480
College of Charleston	\$10,558	\$27,548
Francis Marion University	\$9,738	\$19,004
Lander University	\$10,418	\$19,738
South Carolina State University	\$10,089	\$19,856
USC - Aiken	\$9,552	\$18,876
USC - Beaufort	\$9,354	\$19,374
USC - Columbia	\$11,158	\$29,440
USC - Upstate	\$10,348	\$20,698
Winthrop University	\$13,812	\$26,738

Source: S.C. Commission on Higher Education

SOUTH CAROLINA PUBLIC UNIVERSITIES Undergraduate Tuition Comparison

In-State and Out-of-State
2014-2015



**TOTAL FINANCIAL AID
RECEIVED BY COASTAL STUDENTS
FROM ALL SOURCES
2008-2009 to 2013-2014**

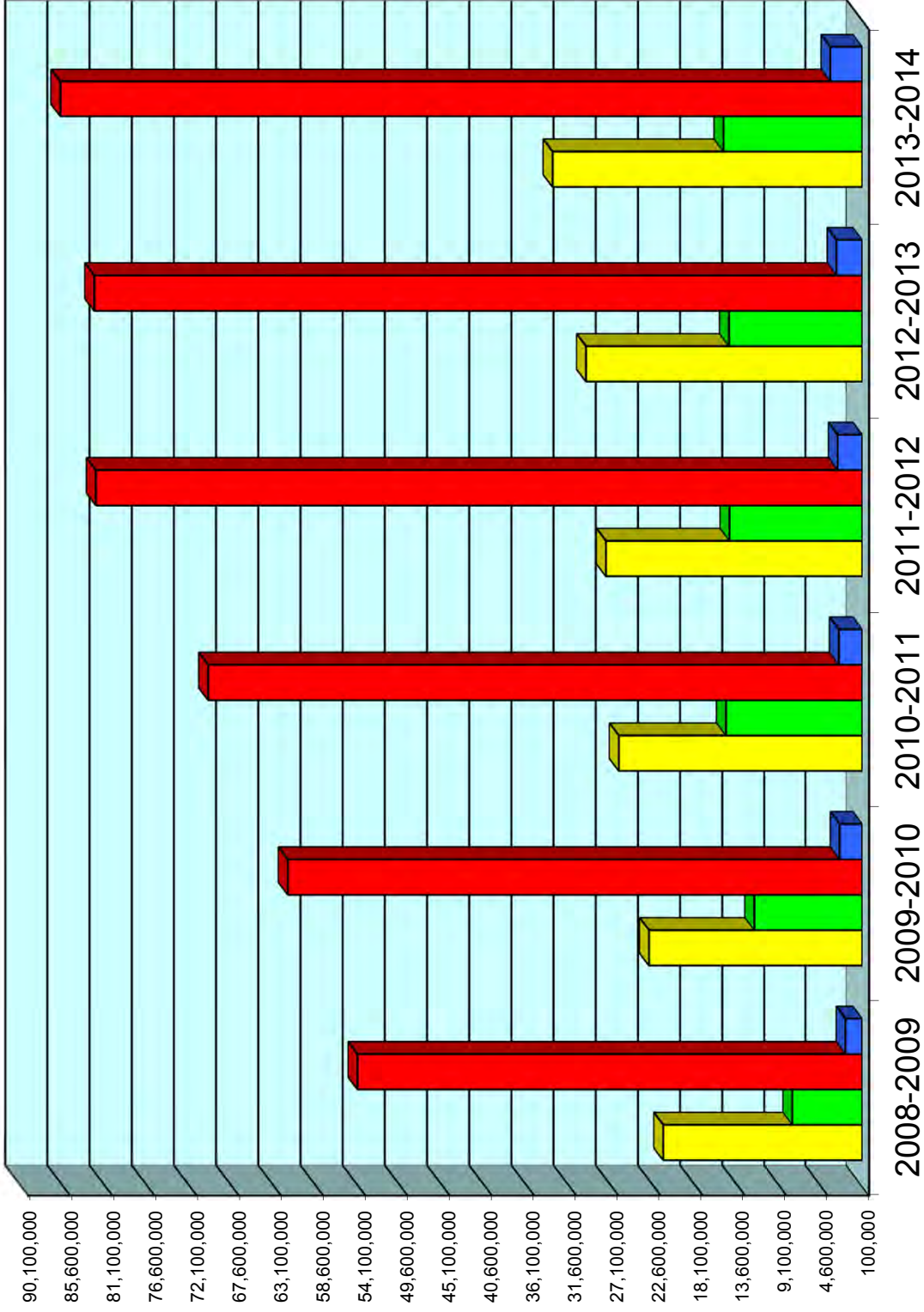
<u>Federal Financial Aid</u>	<u>2008-2009</u>	<u>2009-2010</u>	<u>2010-2011</u>	<u>2011-2012</u>	<u>2012-2013</u>	<u>2013-2014</u>	<u>5-Year % Change</u>
Pell Grant	6,214,063	10,530,900	13,481,078	14,097,750	14,273,553	14,811,193	138.35%
ACG/SMART	514,818	839,730	1,036,716	---	---	---	NA
Supplemental Grants	575,274	521,684	402,760	453,569	328,924	378,696	-34.17%
College Work Study	254,986	285,740	296,624	323,962	317,680	308,173	20.86%
Perkins Loans	182,174	125,671	79,000	142,074	141,627	215,651	18.38%
Bank Loans	37,624,861	49,225,282	56,693,532	65,767,852	64,626,729	65,919,891	75.20%
VA Benefits	444,504	---	---	---	---	---	NA
TOTAL FEDERAL AID	45,810,680	61,529,007	71,989,710	80,785,207	79,688,513	81,633,604	78.20%
Other Aid							
Scholarships - Foundation & Commission	1,302,927	1,527,222	1,898,596	2,133,295	2,375,733	2,647,264	103.18%
Athletics Scholarships	5,010,118	5,238,282	5,709,290	6,143,044	6,140,495	6,837,182	36.47%
Other Scholarships	15,303,231	16,362,209	18,740,011	19,451,248	21,336,056	23,933,261	56.39%
Institutional Employment	1,434,539	2,264,825	2,337,838	2,462,849	2,600,562	3,278,360	128.53%
Institutional Work Study	239,266	16,358	29,799	---	---	---	NA
Private Loans	16,419,194	12,311,589	13,383,634	16,224,751	17,545,235	19,783,278	20.49%
TOTAL OTHER AID	39,709,275	37,720,485	42,099,169	46,415,187	49,998,081	56,479,345	42.23%
TOTAL FINANCIAL AID	85,519,955	99,249,492	114,088,878	127,200,394	129,686,594	138,112,949	61.50%
Unduplicated count of students receiving aid	6,437	7,086	7,723	8,323	8,421	8,573	33.18%

Note: VA Benefits are no longer counted towards students' financial aid beginning 2009-2010.

Note: ACG/SMART no longer funded after 2010-2011

Note: Institutional Work Study no longer funded after 2010-11.

FINANCIAL AID DISBURSEMENTS 2008-2009 TO 2013-2014



■ Scholarships
 ■ Pell, SEOG, VA, ACG
 ■ Loans
 ■ Employment

BUILDINGS INVENTORY
Fall 2014

Building Name	Gross Area	Net E & G	Classrooms		Laboratories		Replacement Cost of Buildings*
	Square Feet	Square Feet	Number	Stations	Number	Stations	
Adkins Field House	62,561	33,901	---	---	---	---	\$11,900,000
Arcadia Hall	11,881	7,789	---	---	---	---	\$1,789,662
Atheneum Hall	10,879	5,951	---	---	---	---	\$2,566,647
Athletics Grounds Maintenance Building	3,840	3,481	---	---	---	---	\$165,000
Atlantic Hall/Procurement Office	18,422	15,211	---	---	---	---	\$1,790,000
Bill Baxley Hall	29,924	15,108	---	---	---	---	\$7,395,846
Billy Nichols Tennis Facility	236	200	---	---	---	---	\$37,397
Brooks Stadium	29,830	23,469	---	---	---	---	\$13,220,207
Bryan Information Commons	18,803	14,167	---	---	---	---	\$4,881,122
Burroughs Chapin Marine and Wetland	74,090	62,843	1	24	2	51	\$8,145,234
Chemical Storage Building	445	363	---	---	---	---	\$92,117
Clay Brittain Hall	49,146	27,736	14	682	1	30	\$12,000,000
Coastal Band Hall	6,488	4,881	---	---	---	---	\$725,624
Coastal Band Hall #2	1,440	1,250	---	---	---	---	\$58,577
Coastal Science Center	69,435	44,966	12	591	5	186	\$8,401,278
Custodial Offices/Facilities	9,220	7,717	---	---	---	---	\$979,318
E. Craig Wall Sr. Building	100,907	53,858	20	1,149	6	211	\$23,946,976
Edward M. Singleton Building	32,907	20,032	---	---	---	---	\$5,992,318
Edwards College of Humanities	111,687	64,389	24	1,300	18	454	\$26,478,028
Eldred E. Prince Building	30,948	20,613	10	327	3	71	\$6,627,004
Environmental Safety/Transportation	13,723	12,681	---	---	---	---	\$1,180,000
Evergreen Hall	2,118	1,790	1	20	---	---	\$267,139
Fred W. Hicks Dining Hall	14,020	0	---	---	---	---	\$3,896,510
Greenhouse	2,880	1,140	---	---	---	---	\$236,139
Greenhouse Office/Storage	281	151	---	---	---	---	\$220,000
Hackler Clubhouse	7,843	5,012	---	---	---	---	\$858,944
Hampton Hall	7,931	5,833	---	---	---	---	\$1,517,020
HTC Recreation and Convocation Center	159,293	52,176	---	---	---	---	\$30,000,000
Human Resources Office	5,753	4,047	---	---	---	---	\$1,059,953
Indigo House	2,828	2,086	---	---	---	---	\$307,909
Intramural Grounds/Recreation Offices	5,935	2,950	---	---	---	---	\$375,000
Kearns Hall	31,283	16,501	4	161	---	---	\$6,367,978
Kenneth E. Swain Hall	40,845	21,933	1	30	5	121	\$13,000,000
Kimbel Library	46,674	22,885	---	---	---	---	\$6,550,077
Kingston Hall	12,698	5,128	---	---	---	---	\$1,574,265
Laurel Center	1,785	1,357	---	---	---	---	\$182,714
Lib Jackson Student Center	31,108	6,057	---	---	---	---	\$7,534,703
Media and Athletic Storage	2,576	2,128	---	---	---	---	\$256,765
Physical Plant Grounds Equipment	4,000	3,225	---	---	---	---	\$333,644
Physical Plant Maintenance Shop	7,950	7,932	---	---	---	---	\$648,580
Physical Plant Tractor/Pesticide Storage	1,240	100	---	---	---	---	\$125,816
Public Safety Building	5,811	3,355	---	---	---	---	\$1,020,000
R. Cathcart Smith Science Center	40,209	24,932	6	213	10	239	\$10,292,479
Sands Hall	12,035	5,291	---	---	---	---	\$1,790,057
Student Health Center / Counseling	7,888	4,506	---	---	---	---	\$1,240,515
Wheelwright Auditorium	31,899	14,247	---	---	---	---	\$12,137,613
Williams Brice Recreation Center	65,794	45,720	4	137	5	245	\$15,655,933
Winyah House	4,284	2,888	---	---	---	---	\$574,917
Subtotal	1,243,773	703,976	97	4,634	55	1,608	\$256,397,025
Subtotal	1,243,773	703,976	97	4,634	55	1,608	\$256,397,025
Higher Education Centers*	41,293	27,051	5	214	1	51	\$18,900,000
Subtotal E & G Space	1,285,066	731,027	102	4,848	56	1,659	\$275,297,025
Residence Halls	1,107,483	0	---	---	---	---	\$103,685,299
TOTAL	2,392,549	731,027	102	4,848	56	1,659	\$378,982,324

Source: South Carolina Commission on Higher Education

*Leased Property



Office of Institutional Research, Assessment and Analysis

Coastal Carolina University • P.O. Box 261954 • Conway, SC 29528-6054 • coastal.edu