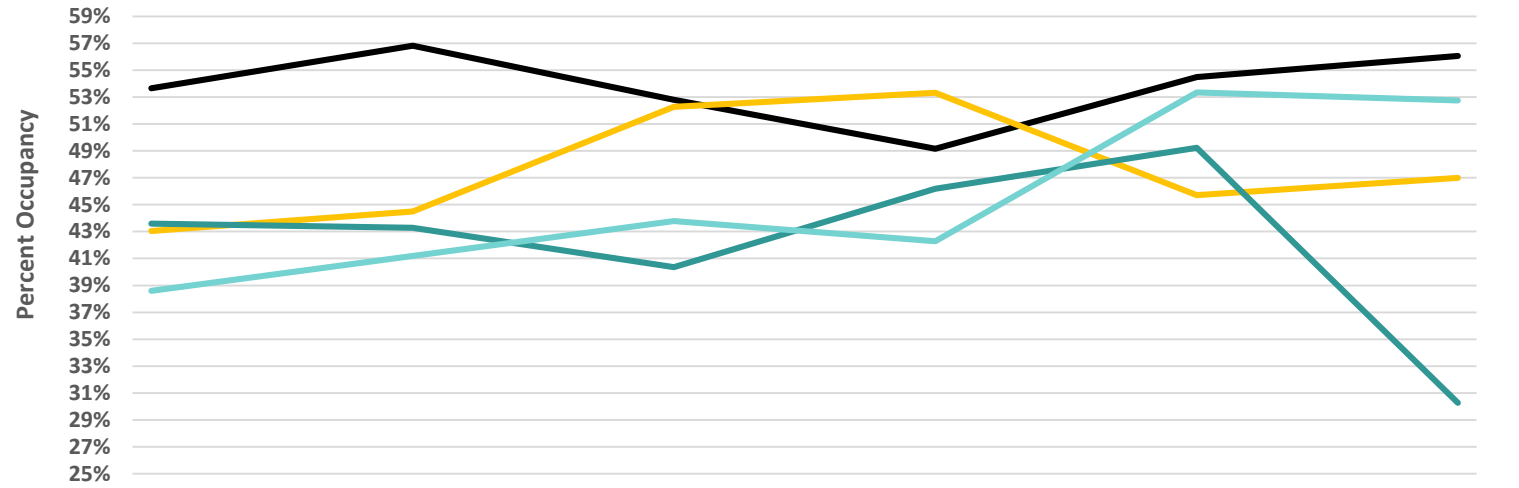
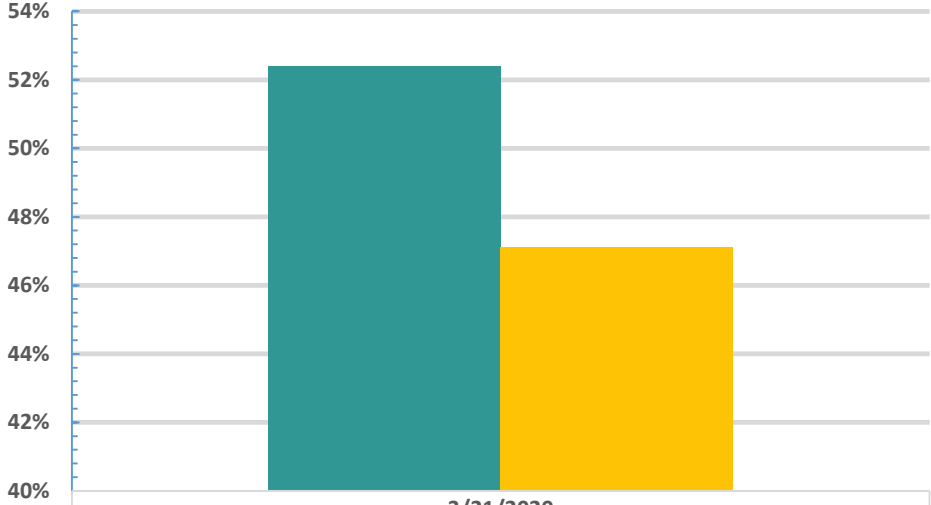


**Average Percent Occupancy in
Nightly Rented Hotels, Condo-Hotels, and Campsites (HC-HCs)
and Bookings of Weekly Rented Vacation Rental Properties (VRPs)
Horry County, S.C., USA**



Date of Arrival	2/14/2020	2/21/2020	2/28/2020	3/6/2020	3/13/2020	3/20/2020
VRP APO this year	54%	57%	53%	49%	54%	56%
VRP APO last year	43%	45%	52%	53%	46%	47%
HC-HC APO this year	44%	43%	40%	46%	49%	30%
HC-HC APO last year	39%	41%	44%	42%	53%	53%

**Average Percent of Weekly Vacation Rentals in Horry and Georgetown Counties
Booked Four Days in Advance of the Date of Arrival**



	3/21/2020
■ Percent of units booked by date of arrival this year	52.41%
■ Percent booked for equivalent week last year	47.11%